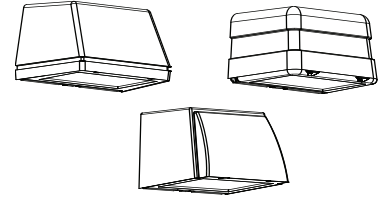


# NITE BRITES

JOB NAME \_\_\_\_\_

TYPE \_\_\_\_\_

## WTM/WRM/WBM- LED MEDIUM FULL CUTOFF WALL PACK 40 and 60 watt LED

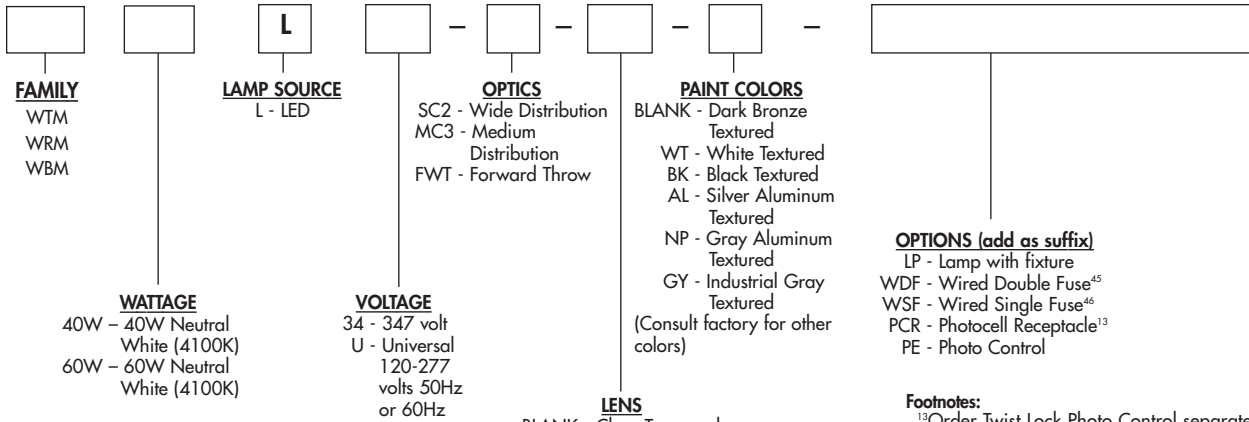


The LED Medium Full Cutoff Wall Pack offers a sleek design and cutoff performance with a wide range of uses. It delivers the lighting needed for the exteriors of retail buildings, businesses, walkways, underpasses or entrance doors.



### ORDERING MATRIX

SAMPLE CATALOG NUMBER: WTM60WLU-FWT-BK



#### OPTIONS (add as suffix)

- LP - Lamp with fixture
- WDF - Wired Double Fuse<sup>45</sup>
- WSF - Wired Single Fuse<sup>46</sup>
- PCR - Photocell Receptacle<sup>13</sup>
- PE - Photo Control

#### Footnotes:

- <sup>13</sup>Order Twist Lock Photo Control separately.
- <sup>45</sup>Use with 208 and 240 volt.
- <sup>46</sup>Use with 120, 277 and 347 volt.

#### General Notes:

- All options are factory installed.
- All accessories are field installed.
- Data subject to change without notice.

#### Predicted L70 Lifetime:

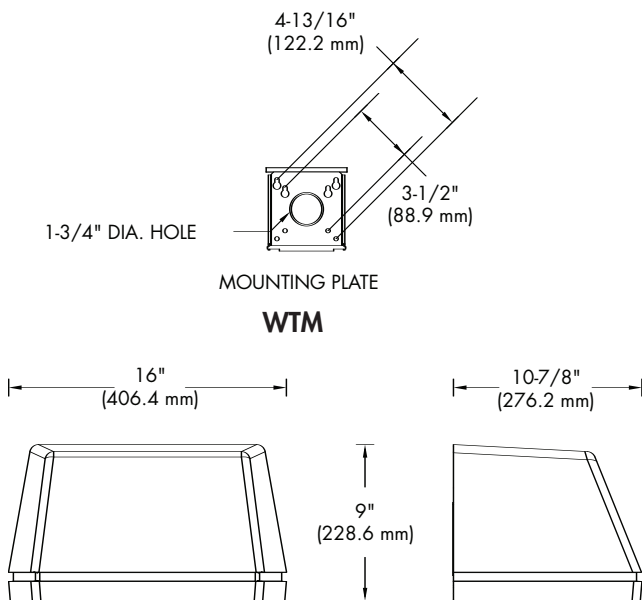
- 25°C Ambient - >60,000 hours
- 40°C Ambient - >60,000 hours
- (based upon LED manufacturer's supplied LM-80 data and in-situ laboratory testing)

#### ACCESSORIES (order separately)

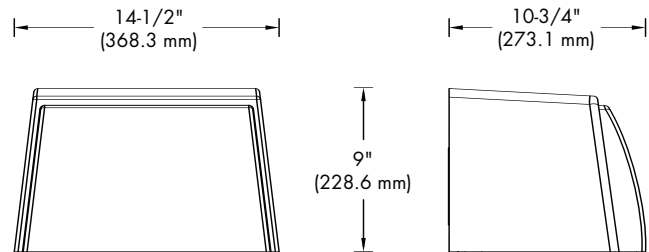
- PC-MT - Photo Control Twist Lock, multi-volt (must use PCR option)
- PCR-SC - PCR Shorting Cap
- (For additional descriptions of Wall Light accessories refer to sheet number OA-50030.)

- LENS**  
BLANK - Clear Tempered Glass Lens  
FGS - Flat Solite Diffusing Tempered Glass Lens

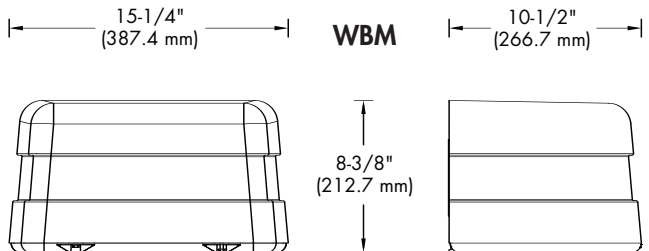
### DIMENSIONS



#### WRM



#### WBM



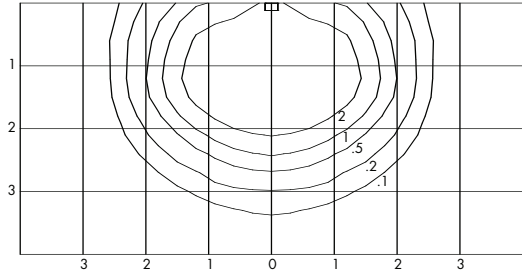
WEIGHT = 19 lbs. (max.)

WTM/WRM/WBM-LED MEDIUM FULL CUTOFF WALL PACK

WL-43171

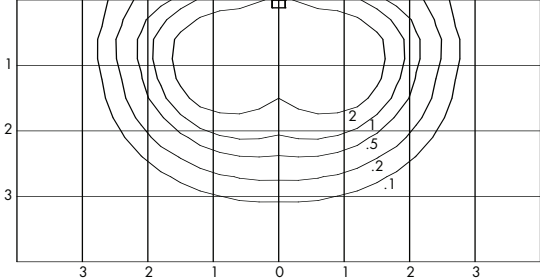
**PHILIPS**  
**Day-Brite**

## PHOTOMETRICS

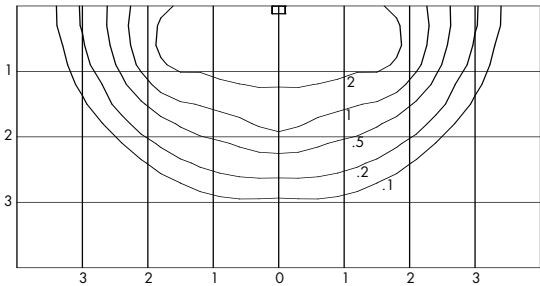


CATALOG NUMBER: WTM60WL-FWT  
 TEST NUMBER: 28822  
 LAMP: LED  
 WATTAGE: 62  
 LUMENS: 2634  
 TILT ANGLE: 0°  
 MOUNTING HEIGHT: 15 FEET

LIGHT LEVEL MULTIPLYING FACTORS	
MOUNTING HEIGHT	MULTIPLIER
25'	0.36
20'	0.56
15'	1.00
12'	1.56
10'	2.25
8'	3.52



CATALOG NUMBER: WTM60WL-MC3  
 TEST NUMBER: 28830  
 LAMP: LED  
 WATTAGE: 62  
 LUMENS: 2575  
 TILT ANGLE: 0°  
 MOUNTING HEIGHT: 15 FEET



CATALOG NUMBER: WTM60WL-SC2  
 TEST NUMBER: 28826  
 LAMP: LED  
 WATTAGE: 62  
 LUMENS: 2603  
 TILT ANGLE: 0°  
 MOUNTING HEIGHT: 15 FEET

Note: Photometric values based on tests performed in compliance with LM-79

UNITS SHOWN IN TERMS OF MOUNTING HEIGHT  
 INITIAL FOOTCANDLES SHOWN

### ADDITIONAL TEST NUMBERS

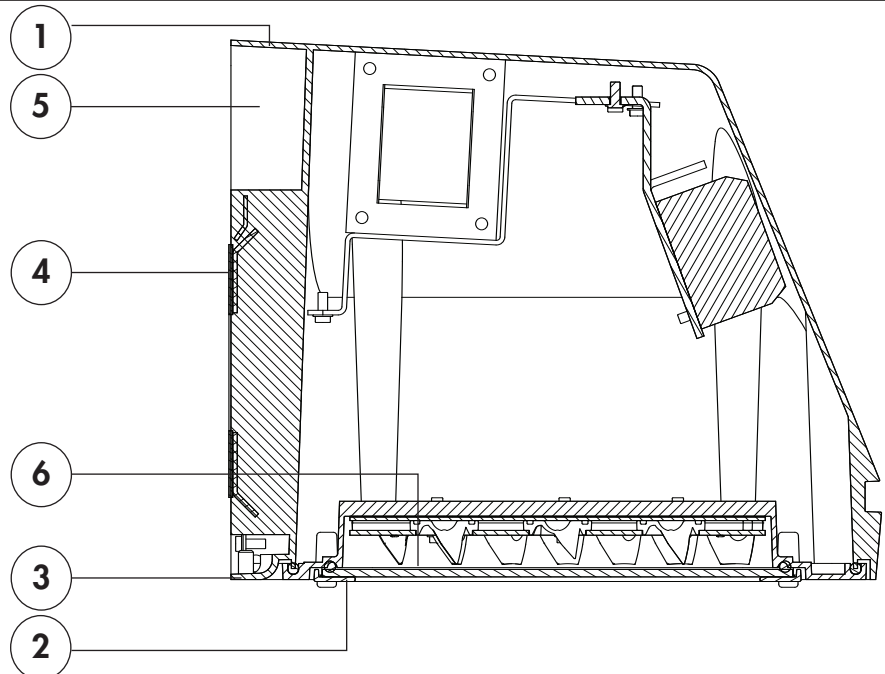
DESCRIPTION/CATALOG NUMBER	TEST NUMBER	WATTAGE	LUMENS
WTM60WL-SC2-FGS	28827	62	2283
WTM60WL-MC3-FGS	28831	62	2367
WTM60WL-FWT-FGS	28823	62	2421
WTM40WL-SC2	28835	42	2005
WTM40WL-MC3	28833	42	1957
WTM40WL-FWT	28840	42	1934
WTM40WL-SC2-FGS	28836	42	1556
WTM40WL-MC3-FGS	28832	42	1799
WTM40WL-FWT-FGS	28841	42	1801

## PRODUCT FEATURES

Certified to meet UL 1589 standards for wet location, and 40°C ambient for all lamp wattages listed.

1. Heavy duty, die cast aluminum housing.
2. Die-cast aluminum heat sink designed for excellent thermal transfer to extend component life.
3. Silicone gasketing provides protection against moisture.
4. Quick mount wall plate mounts directly to 3-1/2" octagon or 4" square outlet box for easy installation.
5. Polyester powder finish for impact, corrosion and UV resistance.
6. Tempered glass lens is thermal and shock resistant.
7. Furnished with 10kV surge protector.
8. Components are RoHS compliant.
9. LED light engine and driver are field replaceable.

**5 Year Limited Warranty**



**WL-43171**

**DAY-BRITE LIGHTING** • [www.daybritelighting.com](http://www.daybritelighting.com)  
 776 South Green Street • Tupelo, Mississippi 38804 • PH: (662) 842-7212 • FAX: (662) 841-5501  
**CANADIAN DIVISION**  
 189 Bullock Drive • Markham, Ontario L3P 1W4 • PH: (905) 294-9570 • FAX: (905) 294-9811  
 ©JUNE 2010 All rights reserved.

**PHILIPS**  
**Day-Brite**