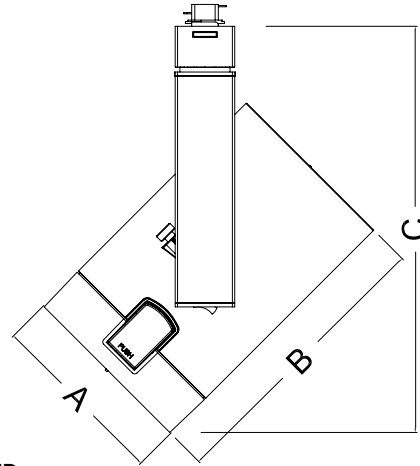


CT7467/CT7468

CORE - Electronic HID

Catalog Number: _____
 Type: _____
 Project: _____



LEGEND
 Diameter: A = 4-1/2" (115mm)
 Length: B = 7-1/4" (184mm)
 Max. Height: C = 10-5/16" (262mm)

PRODUCT DESCRIPTION

Die-cast aluminum lamp housing with an extruded vertical ballast housing. The CT7467/CT7468 is designed for use with Capri's two circuit/two neutral, 120V/20A track lighting system or monopoint canopy.

CATALOG SYSTEM & OPTIONS

| CATALOG NO. | FINISHES | ACCESSORIES (ordered separately) | AVAILABLE LAMP SOURCE/WATTAGES |
|-------------|---------------------------|---|-----------------------------------|
| CT7467 | W - white | CF13- CF18 see filter/lens chart on reverse side of sheet | PAR20 CMH 20W max (CT7467) |
| CT7468 | BK - black SL - silver | CL71 & CL74 - louvers CB71 - barndoor (available in white(W), black (BK) and silver(SL)) | PAR20 CMH 39W max (CT7468) |

SPECIFICATIONS

Lamp Housing - Die-cast aluminum housing, tilts vertically to 180° and rotates horizontally up to 360°. The housing comes standard with a toolless, front lens ring hinge and latch system for easy access to the lamp and accessories.

Ballast/Ballast Housing - Standard electronic ballast designed for optimum performance and color uniformity. The extruded aluminum housing comes with a vented Capri logo for heat dissipation.

Swiss Movement Aiming System - The silk screened, Swiss movement aiming system "clicks" into place to ensure precise aiming up to 180°. Attached set screw securely locks the lamp housing into the preferred aiming position.

Captive Media Ring - The smooth, black captive media ring holds up to three media, a louver and two lenses, intact during relamping or maintenance.

Finishes - Wet coat finish is available in white (W), black (BK) and silver (SL).

On/Off Switch - Integral switch on the bottom of the ballast housing permits safe interruption of power to the individual luminaire for routine relamping and maintenance

ETL and c/ETL Listed

03/09

TR2-8

CAPRI LIGHTING: 776 South Green St., Tupelo, MS 38804 Phone 662.842.7212 FAX 662.841.5501

Capri Lighting is a Philips group brand



CMH PAR20 / METAL HALIDE LAMPS

| | BEAM Spread | CBCP | Rated Life | horizontal aiming angles | | | | | | | | vertical aiming angles | | | | | | | | | | | | | | | | | | | | | | | | | | | | | | | | | | | | | | | | | | | | | |
|------------------------|-------------|-------|------------|--------------------------|-----|-----|-----|-----|-----|-----|-----|------------------------|-----|-----|-----|---|-----|-----|-----|----|----|-----|-----|----|----|-----|-----|---|-----|-----|-----|-----|---|-----|-----|-----|-----|---|-----|-----|-----|-----|---|-----|-----|-----|-----|---|-----|----|-----|-----|---|-----|-----|-----|-----|
| | | | | 0° | | | | 30° | | | | 30° | | | | | | 45° | | | | | | | | | | | | | | | | | | | | | | | | | | | | | | | | | | | | | | | |
| | | | | MH | FC | L | W | MH | FC | L | W | D | C | FC | L | W | D | C | FC | L | W | | | | | | | | | | | | | | | | | | | | | | | | | | | | | | | | | | | | |
| 20W PAR20 spot | 8° | 13000 | 7500 | 8 | 203 | 1.1 | 1.1 | 10 | 130 | 1.4 | 1.4 | 12 | 90 | 1.7 | 1.7 | 8 | 132 | 1.5 | 1.3 | 10 | 84 | 1.9 | 1.6 | 12 | 59 | 2.2 | 1.9 | 3 | 5.2 | 181 | 1.7 | 0.8 | 4 | 4.0 | 287 | 1.1 | 0.8 | 5 | 8.7 | 65 | 2.8 | 1.4 | 6 | 6.0 | 128 | 1.7 | 1.2 | | | | | | | | | | |
| 20W PAR20 flood | 25° | 3750 | 7500 | 6 | 104 | 2.7 | 2.7 | 8 | 59 | 3.5 | 3.5 | 10 | 38 | 4.4 | 4.4 | 6 | 68 | 3.6 | 3.1 | 8 | 38 | 4.8 | 4.1 | 10 | 24 | 6.0 | 5.1 | 2 | 3.5 | 117 | 4.2 | 1.8 | 3 | 3.0 | 147 | 2.8 | 1.9 | 3 | 5.2 | 52 | 6.2 | 2.7 | 4 | 4.0 | 83 | 3.7 | 2.5 | 4 | 6.9 | 29 | 8.3 | 3.5 | 5 | 5.0 | 53 | 4.7 | 3.1 |
| 39W PAR20 spot | 10° | 22000 | 10000 | 8 | 344 | 1.1 | 1.1 | 10 | 220 | 1.4 | 1.4 | 12 | 153 | 1.7 | 1.7 | 8 | 132 | 1.5 | 1.3 | 10 | 84 | 1.9 | 1.6 | 12 | 59 | 2.2 | 1.9 | 3 | 5.2 | 181 | 1.7 | 0.8 | 4 | 4.0 | 287 | 1.1 | 0.8 | 4 | 6.9 | 102 | 2.3 | 1.1 | 5 | 5.0 | 184 | 1.4 | 1.0 | 5 | 8.7 | 65 | 2.8 | 1.4 | 6 | 6.0 | 128 | 1.7 | 1.2 |
| 39W PAR20 flood | 25° | 7500 | 10000 | 6 | 208 | 2.7 | 2.7 | 8 | 117 | 3.5 | 3.5 | 10 | 75 | 4.4 | 4.4 | 6 | 135 | 3.6 | 3.1 | 8 | 76 | 4.8 | 4.1 | 10 | 49 | 6.0 | 5.1 | 2 | 3.5 | 234 | 4.2 | 1.8 | 3 | 3.0 | 295 | 2.8 | 1.9 | 3 | 5.2 | 104 | 6.2 | 2.7 | 4 | 4.0 | 166 | 3.7 | 2.5 | 4 | 6.9 | 59 | 8.3 | 3.5 | 5 | 5.0 | 106 | 4.7 | 3.1 |

CMH PAR30 / METAL HALIDE LAMPS

| | BEAM Spread | CBCP | Rated Life | horizontal aiming angles | | | | | | | | vertical aiming angles | | | | | | | | | | | | | | | | | | | | | | | | | | | | | | | | | | | | | | | | | | | | | |
|------------------------|-------------|-------|------------|--------------------------|-----|-----|-----|-----|-----|-----|-----|------------------------|----|-----|-----|----|-----|-----|-----|----|-----|-----|-----|----|-----|------|------|---|-----|-----|-----|-----|---|---|-----|-----|-----|---|------|-----|------|-----|----|----|-----|------|-----|----|------|----|------|-----|----|----|----|------|-----|
| | | | | 0° | | | | 30° | | | | 30° | | | | | | 45° | | | | | | | | | | | | | | | | | | | | | | | | | | | | | | | | | | | | | | | |
| | | | | MH | FC | L | W | MH | FC | L | W | D | C | FC | L | W | D | C | FC | L | W | | | | | | | | | | | | | | | | | | | | | | | | | | | | | | | | | | | | |
| 39W PAR30 spot | 10° | 44000 | 9000 | 15 | 187 | 2.6 | 2.6 | 20 | 105 | 3.5 | 3.5 | 25 | 67 | 4.4 | 4.4 | 10 | 273 | 2.3 | 2 | 15 | 121 | 3.5 | 3 | 20 | 68 | 4.7 | 4 | 5 | 8.7 | 210 | 3.6 | 1.7 | 8 | 8 | 232 | 2.8 | 2 | 8 | 13.9 | 82 | 5.7 | 2.8 | 12 | 12 | 103 | 4.2 | 3 | 11 | 19.1 | 43 | 7.9 | 3.8 | 16 | 16 | 58 | 5.5 | 4 |
| 39W PAR30 flood | 30° | 7400 | 9000 | 7 | 153 | 3.8 | 3.8 | 10 | 75 | 5.4 | 5.4 | 13 | 44 | 7 | 7 | 6 | 135 | 4.4 | 3.7 | 9 | 60 | 6.6 | 5.6 | 12 | 34 | 8.8 | 7.4 | 2 | 3.5 | 234 | 5.5 | 2.1 | 4 | 4 | 166 | 4.6 | 3 | 3 | 5.2 | 104 | 8.2 | 3.2 | 6 | 6 | 74 | 6.9 | 4.5 | 8 | 8 | 41 | 9.2 | 6.1 | | | | | |
| 70W PAR30 spot | 10° | 68000 | 9000 | 15 | 276 | 2.6 | 2.6 | 20 | 155 | 3.5 | 3.5 | 25 | 99 | 4.4 | 4.4 | 10 | 403 | 2.3 | 2 | 15 | 179 | 3.5 | 3 | 20 | 101 | 4.7 | 4 | 5 | 8.7 | 310 | 3.6 | 1.7 | 8 | 8 | 143 | 2 | 2 | 8 | 13.9 | 121 | 5.7 | 2.9 | 12 | 12 | 152 | 4.2 | 3 | 1 | 19.1 | 64 | 7.9 | 3.8 | 18 | 16 | 86 | 5.6 | 4 |
| 70W PAR30 flood | 40° | 10000 | 9000 | 7 | 184 | 5.1 | 5.1 | 10 | 90 | 7.3 | 7.3 | 13 | 53 | 9.5 | 9.5 | 6 | 162 | 6.1 | 5 | 9 | 72 | 9.1 | 7.6 | 12 | 41 | 12.2 | 10.1 | 2 | 3.5 | 181 | 9.7 | 2.9 | 4 | 4 | 199 | 6.7 | 4.1 | 3 | 5.2 | 125 | 14.5 | 4.4 | 6 | 6 | 88 | 10.1 | 6.2 | 4 | 6.9 | 70 | 19.3 | 5.8 | 8 | 8 | 50 | 13.4 | 8.2 |

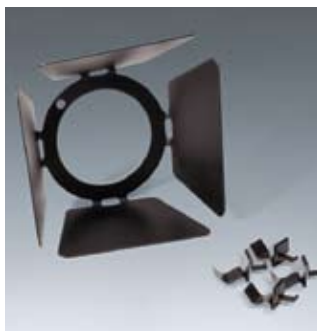
COLOR FILTERS & LENSES



- CF13** Blue Filter, 3-1/4" Dia.
- CF14** Red Filter, 3-1/4" Dia.
- CF15** Green Filter, 3-1/4" Dia.
- CF16** Amber Filter, 3-1/4" Dia.
- CF17** UV Filter, 3-1/4" Dia.
- CF18** Spread Lens, 3-1/4" Dia.

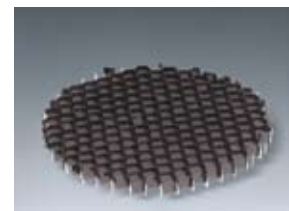
Note: UV Filters are available in other sizes. Consult factory.

BARNDOORS



Individually adjustable blades are used to create lamp shielding and tailor the size of a beam pattern to the illuminated area. Blades can be used to create horizontal cut-off (to keep light out of the viewer's eyes) or vertical cutoff (to stop light at the edge of a wall panel or at the intersection of two walls).
Finishes: W, SL, BK

- CB71** Barn Door Set, 3-7/8" Dia. frame



- CL71** Honeycomb Louver, 3-3/8" Dia.
- CL74** Cube Louver, 3-3/8" Dia.

Capri Lighting reserves the right to make changes without notice. ©2008