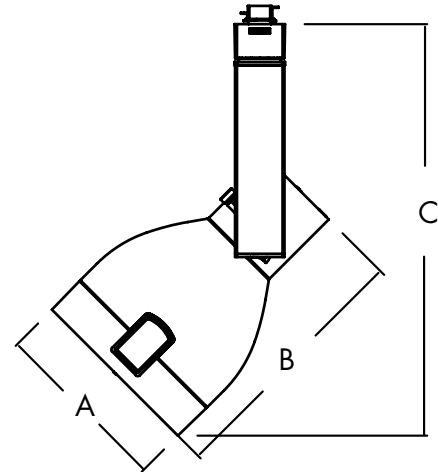
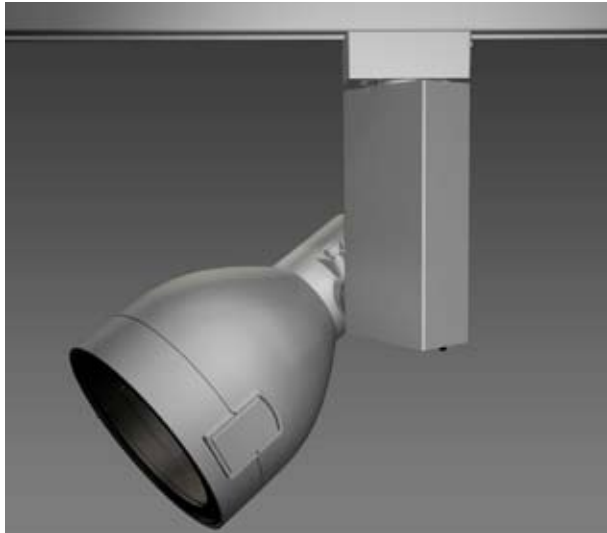


CT7266

AEROS - Electronic HID

Catalog Number: _____
 Type: _____
 Project: _____



LEGEND
 Diameter: A = 5-7/16" (138mm)
 Length: B = 7-7/8" (200mm)
 Max. Height: C = 12-15/16" (328mm)

PRODUCT DESCRIPTION

Die-cast aluminum lamp housing with an extruded vertical ballast housing. The CT7266 is designed for use with Capri's two circuit/two neutral; 120V/20A track lighting system and monopoint canopy.

CATALOG SYSTEM & OPTIONS

CATALOG NO.	FINISH	ACCESSORIES (ordered separately)	AVAILABLE LAMP SOURCE
CT7266	W - white BK - black SL - silver	CF22- CF28 see filter/lens chart on reverse side of sheet CL72 & CL75 - louvers CB72 - barndoor (available in white(W), black (BK) and silver(SL))	PAR38 CMH 70W max

SPECIFICATIONS

Lamp Housing - Die-cast aluminum housing, tilts vertically to 180° and rotates horizontally up to 360°. The housing comes standard with a toolless, front lens ring hinge and latch system for easy access to the lamp and accessories.

Ballast/Ballast Housing - Standard electronic ballast designed for optimum performance and color uniformity. The extruded aluminum housing comes with a vented Capri logo for heat dissipation.

Swiss Movement Aiming System - The silk screened Swiss movement aiming system "clicks" into place to ensure precise aiming up to 180°. Attached set screw securely locks the lamp housing into the preferred aiming position.

Captive Media Ring - The smooth, black captive media ring holds up to three media, a louver and two lenses intact during relamping or maintenance.

Finishes - Wet coat finish is available in white (W), black (BK) and silver (SL).

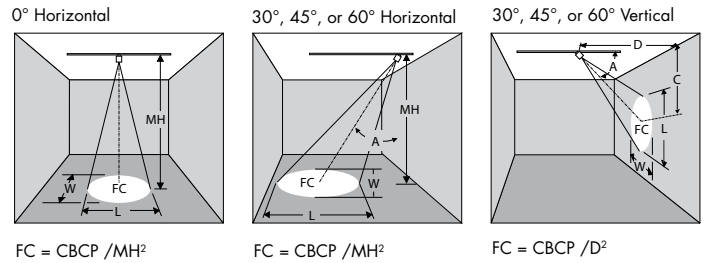
On/Off Switch - Integral switch located on the bottom of the ballast housing permits safe interruption of power to the individual luminaire for routine relamping and maintenance.

ETL and c/ETL Listed

03/09

TR2-27

MH	L	D	CBCP	FC	W	C
Distance from the fixture to illuminated surface	Beam length in feet	Distance from the fixture to the wall	Center beam candle-power	Footcandle level at center of beam	Beam width in feet	Distance to the center of the beam from the ceiling



CMH PAR38 / METAL HALIDE LAMPS

	BEAM Spread	CBCP	Rated Life	horizontal aiming angles								vertical aiming angles									
				0°				30°				30°					45°				
				MH	FC	L	W	MH	FC	L	W	D	C	FC	L	W	D	C	FC	L	W
70W PAR38 spot	15°	50000	12000	15	222	3.9	3.9	10	325	3.5	3	5	8.7	250	5.6	2.6	8	8	276	4.3	3
				20	125	5.3	5.3	15	144	5.3	4.6	8	13.9	98	8.9	4.2	12	12	123	6.4	4.5
				25	80	6.6	6.6	20	81	7.1	6.1	11	19.1	52	12.2	5.8	16	16	69	8.6	6
70W PAR38 flood	26°	18000	12000	8	281	3.5	3.5	7	239	4.2	3.6	3	5.2	250	6.2	2.7	5	5	255	4.7	3.1
				12	125	5.3	5.3	10	117	6	5.1	4	6.9	141	8.3	3.5	7	7	130	6.5	4.4
				16	70	7.1	7.1	13	69	7.8	6.7	5	8.7	90	10.4	4.4	9	9	79	8.4	5.6

COLOR FILTERS & LENSES



- CF22** Spread Lens, 4-3/4" Dia.
- CF23** Blue Filter, 4-3/4" Dia.
- CF24** Red Filter, 4-3/4" Dia.
- CF25** Green Filter, 4-3/4" Dia.
- CF26** Amber Filter, 4-3/4" Dia
- CF27** UV Filter, 4-3/4" Dia.
- CF28** Pink Filter, 4-3/4" Dia

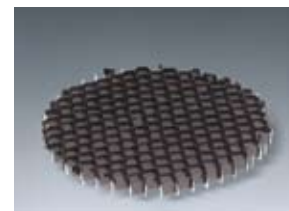
Note: UV Filters are available in other sizes. Consult factory.

BARNDOORS



Individually adjustable blades are used to create lamp shielding and tailor the size of a beam pattern to the illuminated area. Blades can be used to create horizontal cut-off (to keep light out of the viewer's eyes) or vertical cutoff (to stop light at the edge of a wall panel or at the intersection of two walls).
 Finishes: W, SL, BK

CB72 Barn Door Set, 4-7/8" Dia. frame



- CL72** Honeycomb Louver, 4-3/8" Dia.
- CL75** Cube Louver, 4-3/8" Dia.

Capri Lighting reserves the right to make changes without notice. ©2008