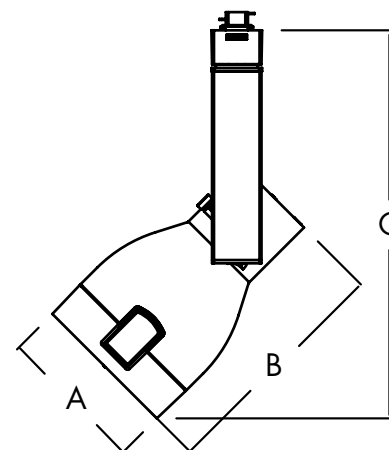
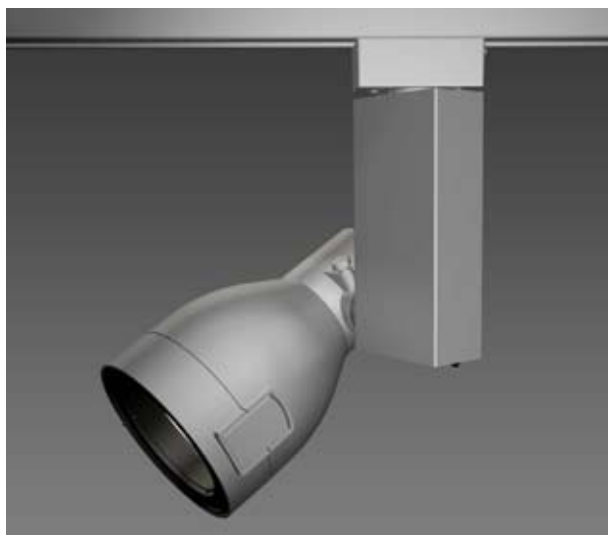


CT7150/CT7151

AEROS - Electronic HID

Catalog Number: _____
 Type: _____
 Project: _____



LEGEND
 Diameter: A = 4-1/2" (114mm)
 Length: B = 7-1/4" (184mm)
 Max. Height: C = 12-1/4" (311mm)

PRODUCT DESCRIPTION

Die-cast aluminum lamp housing with an extruded vertical ballast housing. The CT7150/CT7151 is designed for use with Capri's two circuit/two neutral; 120V/20A track lighting system and monopoint canopy.

CATALOG SYSTEM & OPTIONS

CATALOG NO.	FINISH	DISTRIBUTION	ACCESSORIES (ordered separately)	AVAILABLE LAMP SOURCE/WATTAGES
CT7150 CT7151	W - white BK - black SL - silver	S - spot M - medium F - flood	CF13- CH18 see filter/lens chart on reverse side of sheet CL71 & CL74 - louvers CB71 - barndoor (available in white (W), black(BK) and silver(SL))	T4 CMH; G8.5 base 39W max (CT7150) T4 CMH; G8.5 base 70W max (CT7151)

SPECIFICATIONS

Lamp Housing - Die-cast aluminum housing, tilts vertically to 180° and rotates horizontally up to 360°. The housing comes standard with a toolless, front lens ring hinge and latch system for easy access to the lamp and accessories.

Ballast/Ballast Housing - Standard electronic ballast designed for optimum performance and color uniformity. The extruded aluminum housing comes with a vented Capri logo for heat dissipation.

Swiss Movement Aiming System - The silk screened, Swiss movement aiming system "clicks" into place to ensure precise aiming up to 180°. Attached set screw securely locks the lamp housing into the preferred aiming position.

Captive Media Ring - The smooth, black captive media ring holds up to three media, a louver and two lenses, intact during relamping or maintenance.

Safety Lens - Tempered glass lens meets and exceeds ETL safety standards for ceramic metal halide lamps.

Finishes - Wet coat finish is available in white (W), black (BK) and silver (SL).

On/Off Switch - Integral switch located on the bottom of the ballast housing permits safe interruption of power to the individual luminaire for routine relamping and maintenance.

Reflectors - Three reflector options, spot, medium and flood, provide precise beam spread control.

ETL and c/ETL Listed

03/09

TR2-25

CAPRI LIGHTING: 776 South Green St., Tupelo, MS 38804 Phone 662.842.7212 FAX 662.841.5501

Capri Lighting is a Philips group brand



Consult factory for photometrics.

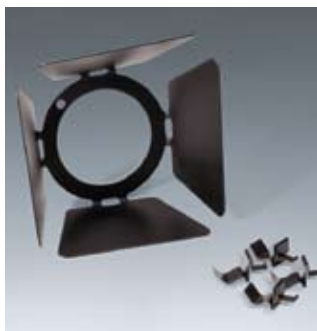
COLOR FILTERS & LENSES



- CF13** Blue Filter, 3-1/4" Dia.
- CF14** Red Filter, 3-1/4" Dia.
- CF15** Green Filter, 3-1/4" Dia.
- CF16** Amber Filter, 3-1/4" Dia.
- CF17** UV Filter, 3-1/4" Dia.
- CF18** Spread Lens, 3-1/4" Dia.

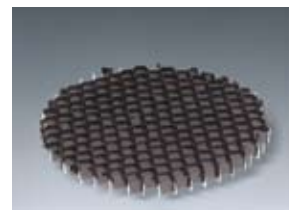
Note: UV Filters are available in other sizes.
Consult factory.

BARNDOORS



Individually adjustable blades are used to create lamp shielding and tailor the size of a beam pattern to the illuminated area. Blades can be used to create horizontal cut-off (to keep light out of the viewer's eyes) or vertical cutoff (to stop light at the edge of a wall panel or at the intersection of two walls).
Finishes: W, SL, BK

- CB71** Barn Door Set, 3-7/8" Dia. frame



- CL71** Honeycomb Louver, 3-3/8" Dia.
- CL74** Cube Louver, 3-3/8" Dia.

Capri Lighting reserves the right to make changes without notice.©2008