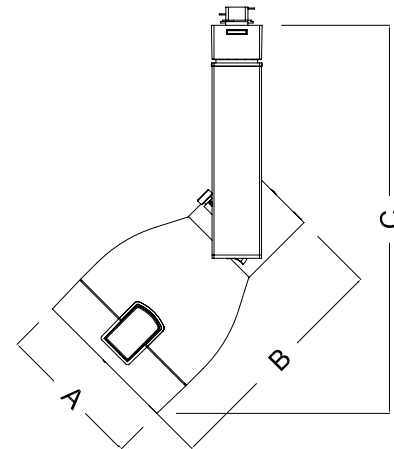
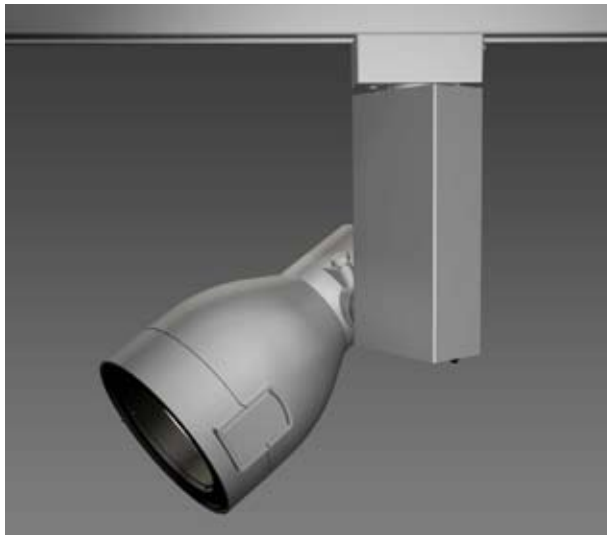


CT7167/CT7168

AEROS - Electronic HID

Catalog Number: _____
 Type: _____
 Project: _____



LEGEND
 Diameter: A = 4-1/2" (114mm)
 Length: B = 7-1/4" (184mm)
 Max. Height: C = 12-1/4" (311mm)

PRODUCT DESCRIPTION

Die-cast aluminum lamp housing with an extruded vertical ballast housing. The CT7167/CT7168 is designed for use with Capri's two circuit/two neutral; 120V/20A track lighting system and monopoint canopy.

CATALOG SYSTEM & OPTIONS

CATALOG NO.	FINISH	ACCESSORIES (ordered separately)	AVAILABLE LAMP SOURCE/WATTAGES
CT7167 CT7168	W - white BK - black SL - silver	CF13- CH18 see filter/lens chart on reverse side of sheet CL71 & CL74 - louvers CB71 - barndoor (available in white(W), black (BK) and silver(SL)	PAR20 CMH 20W max (CT7167) PAR20 CMH 39W max (CT7168)

SPECIFICATIONS

Lamp Housing - Die-cast aluminum housing, tilts vertically to 180° and rotates horizontally up to 360°. The housing comes standard with a toolless, front lens ring hinge and latch system for easy access to the lamp and accessories.

Ballast/Ballast Housing - Standard electronic ballast designed for optimum performance and color uniformity. The extruded aluminum housing comes with a vented Capri logo for heat dissipation.

Swiss Movement Aiming System - The silk screened Swiss movement aiming system "clicks" into place to ensure precise aiming up to 180°. Attached set screw securely locks the lamp housing into the preferred aiming position.

Captive Media Ring - The smooth, black captive media ring holds up to three media, a louver and two lenses intact during relamping or maintenance.

Finishes - Wet coat finish is available in white (W), black (BK) and silver (SL).

On/Off Switch - Integral switch located on the bottom of the ballast housing permits safe interruption of power to the individual luminaire for routine relamping and maintenance.

ETL and c/ETL Listed

03/09

TR2-23

MH Distance from the fixture to illuminated surface

L Beam length in feet

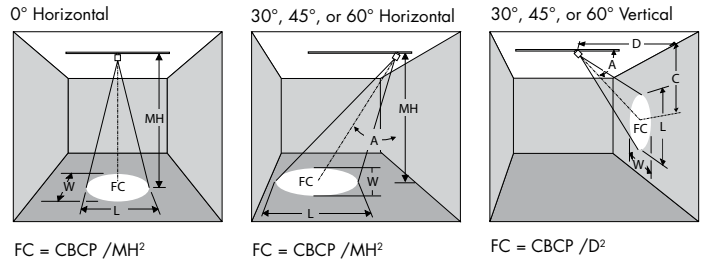
D Distance from the fixture to the wall

CBCP Center beam candle-power

FC Footcandle level at center of beam

W Beam width in feet

C Distance to the center of the beam from the ceiling



CMH PAR20 / METAL HALIDE LAMPS

	BEAM Spread	CBCP	Rated Life	horizontal aiming angles								vertical aiming angles									
				0°				30°				30°					45°				
				MH	FC	L	W	MH	FC	L	W	D	C	FC	L	W	D	C	FC	L	W
20W PAR20 spot	8°	13000	7500	8	203	1.1	1.1	8	132	1.5	1.3	3	5.2	181	1.7	0.8	4	4.0	287	1.1	0.8
				10	130	1.4	1.4	10	84	1.9	1.6	4	6.9	102	2.3	1.1	5	5.0	184	1.4	1.0
				12	90	1.7	1.7	12	59	2.2	1.9	5	8.7	65	2.8	1.4	6	6.0	128	1.7	1.2
20W PAR20 flood	25°	3750	7500	6	104	2.7	2.7	6	68	3.6	3.1	2	3.5	117	4.2	1.8	3	3.0	147	2.8	1.9
				8	59	3.5	3.5	8	38	4.8	4.1	3	5.2	52	6.2	2.7	4	4.0	83	3.7	2.5
				10	38	4.4	4.4	10	24	6.0	5.1	4	6.9	29	8.3	3.5	5	5.0	53	4.7	3.1
39W PAR20 spot	10°	22000	10000	8	344	1.1	1.1	8	132	1.5	1.3	3	5.2	181	1.7	0.8	4	4.0	287	1.1	0.8
				10	220	1.4	1.4	10	84	1.9	1.6	4	6.9	102	2.3	1.1	5	5.0	184	1.4	1.0
				12	153	1.7	1.7	12	59	2.2	1.9	5	8.7	65	2.8	1.4	6	6.0	128	1.7	1.2
39W PAR20 flood	25°	7500	10000	6	208	2.7	2.7	6	135	3.6	3.1	2	3.5	234	4.2	1.8	3	3.0	295	2.8	1.9
				8	117	3.5	3.5	8	76	4.8	4.1	3	5.2	104	6.2	2.7	4	4.0	166	3.7	2.5
				10	75	4.4	4.4	10	49	6.0	5.1	4	6.9	59	8.3	3.5	5	5.0	106	4.7	3.1

COLOR FILTERS & LENSES



- CF13** Blue Filter, 3-1/4" Dia.
- CF14** Red Filter, 3-1/4" Dia.
- CF15** Green Filter, 3-1/4" Dia.
- CF16** Amber Filter, 3-1/4" Dia.
- CF17** UV Filter, 3-1/4" Dia.
- CF18** Spread Lens, 3-1/4" Dia.

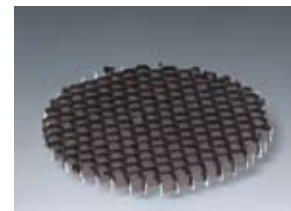
Note: UV Filters are available in other sizes. Consult factory.

BARNDOORS



Individually adjustable blades are used to create lamp shielding and tailor the size of a beam pattern to the illuminated area. Blades can be used to create horizontal cut-off (to keep light out of the viewer's eyes) or vertical cutoff (to stop light at the edge of a wall panel or at the intersection of two walls).
 Finishes: W, SL, BK

CB71 Barn Door Set, 3-7/8" Dia. frame



- CL71** Honeycomb Louver, 3-3/8" Dia.
- CL74** Cube Louver, 3-3/8" Dia.

Capri Lighting reserves the right to make changes without notice. ©2008