

IC6 | H26/32

6" IC Rated Horizontal Lamp Downlight



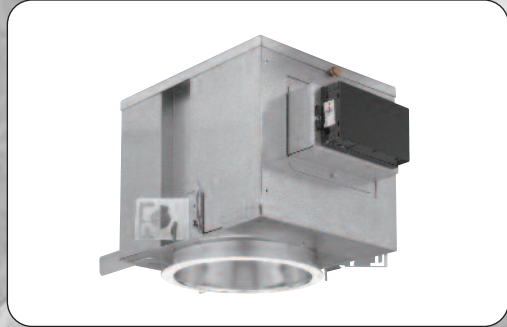
SXI-18.7

REV. 5/09

CAT. NO:

TYPE:

PROJECT:



PRODUCT INFORMATION

Applications

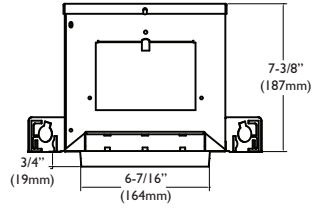
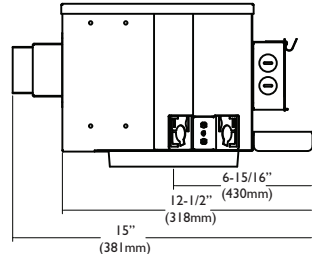
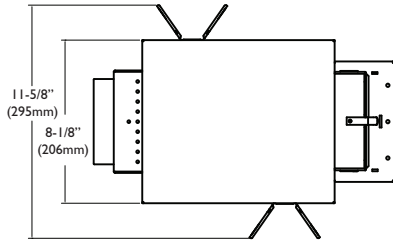
Specification grade recessed downlight UL Listed for direct contact with ceiling insulation. Ideal for applications requiring a balance of efficiency, performance and even illumination.

Specifications

- Ballast** - Type I Class P, high power factor universal voltage electronic compact fluorescent ballast. Offers 1 lamp operation for 120 through 277 volt input voltage.
 - Housing** - Fully enclosed corrosion resistant 20 gauge galvanized steel.
 - Glide Engineering™** - allows the socket assembly to move vertically using constant force springs. Provides easy installation and simple adjustment for ceiling up to 3" thick. Consult factory for ceilings thicker than 3".
 - Installation** - Housing has pre-installed universal mounting brackets with vertical adjustment. Junction box and mounting brackets are accessible from below ceiling. For 24" C-channel bar hanger pair; specify Q1032 accessory, ordered separately. For 27" flat bar hanger pair; specify Q1031 accessory, ordered separately. For 24" adjustable bar hanger pair; for T-grid or wood joist applications, specify Q1033 accessory, ordered separately.
 - Reflector** - Precision spun .051 aluminum, self flanged with clear specular Alzak low inidescient finish. Reflector is screw mounted for positive attachment to socket assembly. Standard flat flange is painted white. Optional polished flange matching reflector finish available, add FF to catalog number.
 - Socket** - CFM32W/GX24q, CFM26W/GX24q, CFM18W/GX24q, CFQ18W/GX24q, CFQ13W/G24q, CFQ26W/GX24q
 - Junction box** - Extra large 43.75-cubic inch 16 gauge galvanized steel with snap-on covers. Approved for through wiring with up to 8 #12 AWG conductors.
 - Optional Emergency System** - Emergency system includes battery, electronic circuitry, charger and test/monitor plate with test switch and charging indicator light. Test/monitor plate may be installed in the ceiling near fixture or other remote location. Operates appropriate lamp wattage for a minimum of 90 minutes following power failure. Battery is recharged automatically following restoration of power. Emergency system complies with NFPA life safety code, OSHA and NEC. Suitable for dry locations.
 - UL Listed** - For use in damp locations and approved for Through Branch Circuit Wiring. I.B.E.V.V. union made.
- 🍁 Canadian Specifications may vary from these shown, consult Canadian Division.



6



CATALOG SYSTEM AND OPTIONS

6" HOUSING

OMEGA Aprt.	Lamp (by others)	Supply Voltage	Options
IC6	H26/32 PLT - Triple Tube CFL	U	EM Emergency
6" IC	IH18 PLT - Triple Tube CFL	120/277	
	IH18 QPL - Quad CFL	347 🍁	
	IH13 QPL - Quad CFL		
	2H18 QPL - Quad CFL		
	2H13 QPL - Quad CFL		

Footnotes:

* EM option requires top access for servicing.

EXAMPLE OF COMPLETE CATALOG NUMBER: IC6 | H26/32PLTU-T61HCS

6" TRIMS

Reflector/Lamp Configuration	Reflector Type	Reflector Finish	Lens Option
T61H	Blank	Open	CS Clear Specular
1 lamp	SPL	Open	CSS Clear Semi-Specular
Horizontal	CSSPL	Clear Spec. Splay	HZ Haze
T62HQPL	BBSPL	Black Baffle Splay	GS Gold Specular
2 lamp	BKSPL	Splay Lens Black	WT Wheat
Horizontal	WW	Wall Wash	PW Pewter
	BB	Black Baffle	BK Black
	WB	White Baffle	BZ Bronze
	TB	Turbo Baffle	WH White
	SHWR	Shower	FF Finish Flange (as suffix to color)
			FL Fresnel Lens
			PL Prismatic Lens
			CL Clear Lens
			POLY Polycarbonate Lens

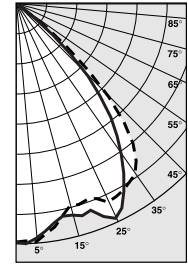


Clear Specular Reflector
IC61H26/32PLTU-T61HCS

Report Number: 21516
Lamp: (1)CFM32W
Total Lumens: 2400
Fixture Efficiency: = 55.9%
IES File: 21516.IES
S/MH Ratio = 1.3, 1.3
Beam Angle: 89.61

LIGHTING PERFORMANCE DATA

CEILING HEIGHT* (FT.)	INITIAL FOOTCANDLES	BEAM DIAMETER (FT.-IN.)
8	25.5	10-11
10	13.7	14-11
12	8.5	18-10
14	5.8	22-10
16	4.2	26-10



Wall Washer with Clear Reflector
IC61H26/32PLTU-T61HWWCS

Source: Compact Fluorescent
Lamp: (1) CFM32W
Reflectances: 80% ceiling, 50% walls, 20% floor
Maintenance Factor: 1.0
IES File: F20219.IES

Distance from ceiling (ft)	2'6" from wall, 2'6" on center	
	Below Fixtures	Between Fixtures
1	3.2	1.8
2	21.5	12.2
3	37.5	37.0
4	33.7	32.7
5	27.1	27.0
6	21.8	21.5
7	17.5	17.3
8	14.6	14.6
9	12.5	12.7

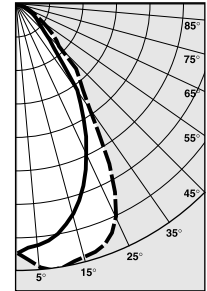


Fresnel Lens with White Regressed Splay
IC62H26QPLU-T62HQPLSPLFL

Report Number: 20722
Lamp: (2) CFQ26W
Total Lumens: 3600
Fixture Efficiency: = 28.9%
IES File: 20722.IES
S/MH Ratio = 0.9, 1.1
Beam Angle: 68.61

LIGHTING PERFORMANCE DATA

CEILING HEIGHT* (FT.)	INITIAL FOOTCANDLES	BEAM DIAMETER (FT.-IN.)
8	24.8	7-6
10	13.4	10-3
12	8.3	12-12
14	5.7	15-8
16	4.1	18-5

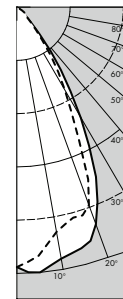


Turbo Baffle

Report Number: CB013
Lamp: (1) QPL26W
Total Lumens: 1825
Fixture Efficiency: = 27.3%
IES File: CB013.IES
S/MH Ratio = 1.0, 0.9
Beam Angle: 56.35

LIGHTING PERFORMANCE DATA

CEILING HEIGHT* (FT.)	INITIAL FOOTCANDLES	BEAM DIAMETER (FT.-IN.)
8	19.0	5 - 11
10	10.2	8 - 0
12	6.4	10 - 2
14	4.3	12 - 4
16	3.2	14 - 6



Black Baffle