

Job Name: _____

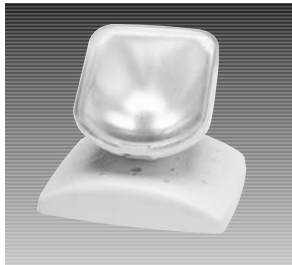
Type: _____

Voltage: _____

These remotes are designed to provide an attractive option for installing remote lamp heads. Each was designed to coordinate with the various matching units and combos offered in the COMPAC line.

HOUSING

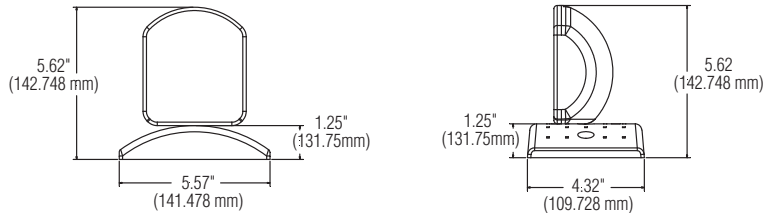
- Constructed of ABS impact resistant thermoplastic. Material is flame rated and UV stable.
- Each remote comes standard with backplate that is designed to mount to a single ganged recessed wall or ceiling junction box.
- Finish is available in white or black.
- All remotes are furnished with the appropriate lamp(s).



	VOLTAGE	WATTAGE	CATALOG NUMBER		NO. OF HEADS
			WHITE	BLACK	
TUNGSTEN	6-VOLT	5.4	CR1CSWA	CR1CSBA	1
	6-VOLT	7.2	CR1CSWB	CR1CSBB	1
	6-VOLT	9	CR1CSWC	CR1CSBC	1
	12-VOLT	12	CR1CSWJ	CR1CSBJ	1
HALOGEN	6-VOLT	6	CR1CSWD	CR1CSBD	1
	6-VOLT	12	CR1CSWF	CR1CSBF	1
	12-VOLT	8	CR1CSWL	CR1CSBL	1
	12-VOLT	12	CR1CSWM	CR1CSBM	1

CR SINGLE REMOTE LAMP HEADS

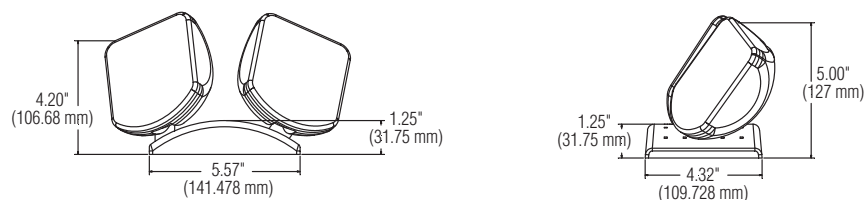
The CR, single lamp head remote, is available with a choice of tungsten or halogen lamp options. The CR remotes are designed to be used in conjunction with the CTX, various CTXR units, or CCTX combos.



	VOLTAGE	WATTAGE	CATALOG NUMBER		NO. OF HEADS
			WHITE	BLACK	
TUNGSTEN	6-VOLT	5.4	CR2CSWA	CR2CSBA	2
	6-VOLT	7.2	CR2CSWB	CR2CSBB	2
	6-VOLT	9	CR2CSWC	CR2CSBC	2
	12-VOLT	12	CR2CSWJ	CR2CSBJ	2
HALOGEN	6-VOLT	6	CR2CSWD	CR2CSBD	2
	6-VOLT	12	CR2CSWF	CR2CSBF	2
	12-VOLT	8	CR2CSWL	CR2CSBL	2
	12-VOLT	12	CR2CSWM	CR2CSBM	2

CR DOUBLE REMOTE LAMP HEADS

The CR, double lamp head remote, is available with a choice of tungsten or halogen lamp options. The CR remotes are designed to be used in conjunction with the CTX, various CTXR units, or CCTX combos.



COMPAC® REMOTE LAMP HEADS

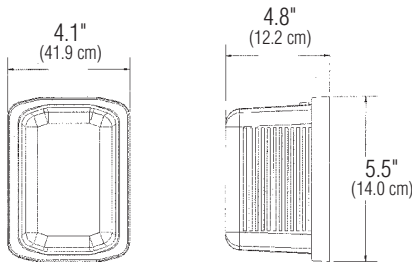


	VOLTAGE	WATTAGE	CATALOG NUMBER		NO. OF LAMPS
			WHITE	BLACK	
HALOGEN	6-VOLT	5	CCHR1W5	CCHR1B5	1
HALOGEN	6-VOLT	10	CCHR1W10	CCHR1B10	1
HALOGEN	6-VOLT	5	CCHR2W5	CCHR2B5	2

*For Exterior use suffix catalog number with G. (Ex. CCHR1W5G)

CCH SINGLE REMOTE LAMP HEADS

The CCHR remote is available with a choice of 5 or 10 Watt MR11 lamps. The polycarbonate diffuser utilizes linear frosted sections to control sight-light glare and maximize lamp efficiency. The CCHR remote was designed to be used in conjunction with the CCHX combo.



	VOLTAGE	WATTAGE	CATALOG NUMBER		NO. OF LAMPS
			WHITE	BLACK	
HALOGEN	6-VOLT	6	CAR1W6	CAR1B6	1
HALOGEN	6-VOLT	8	CAR1W9	CAR1B9	1
HALOGEN	6-VOLT	12	CAR1W12	CAR1B12	1
HALOGEN	6-VOLT	20	CAR1W20	CAR1B20	1
HALOGEN	12-VOLT	12	CAR12W12	CAR12B12	1
HALOGEN	12-VOLT	20	CAR12W20	CAR12B20	1

CA SINGLE REMOTE LAMP HEADS

The CAR remote is a truly compact remote utilizing a MR16 lamp. The CAR remote is the perfect match when operating a remote with the CAXR unit. This remote is also designed with one flat side that will allow for mounting two single remotes together (Hardwire by others; Threaded nipple & 2 locknuts).

