

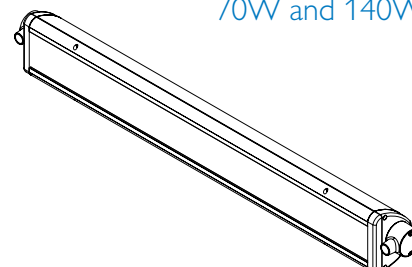
Decorative Commercial

Barista BLN

LED Linear Sign/Wall Light

High Lumen

70W and 140W



Specifier's Reference

Project
Type
Model No.
Comments

application

- The Barista Linear Series provides excellent performance as a sign light, accent light, wall wash, or path light. The application possibilities are endless.

construction/finish

- Heavy duty extruded aluminum housing.
- Die cast aluminum end caps.
- Aluminum door frame with stainless steel captive fasteners and tempered glass lens.
- Heavy duty die cast mounting hub/wiring compartment with 3/4-14 NPS threaded mounting allows 365 degrees of rotation for easy aiming.
- Polyester powder finish for excellent impact, corrosion and UV resistance.
- Clear tempered glass lens is thermal and shock resistant. Optional diffuse tempered glass lens provides excellent light output with low glare.
- Three different light distributions available for a variety of applications.
- Components are RoHS compliant.
- LED light engine and driver are field replaceable.

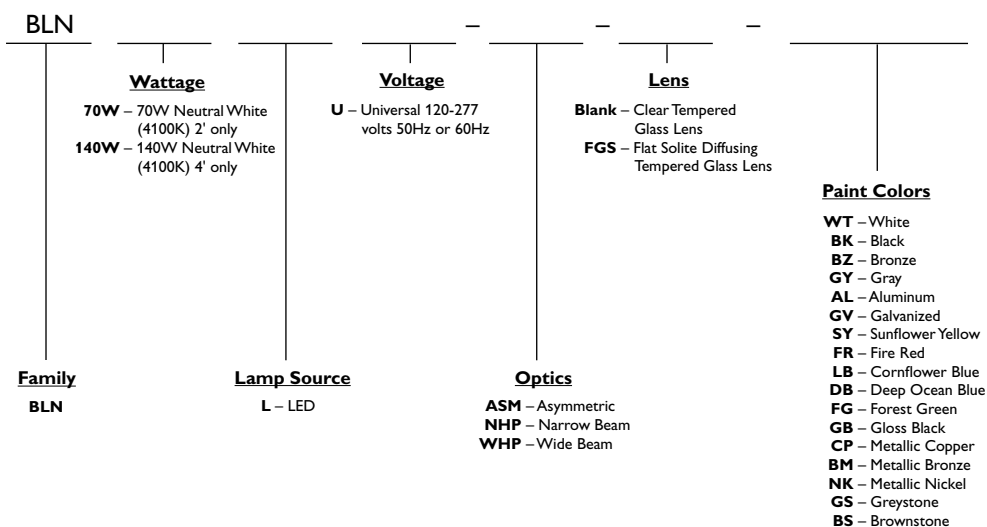
electrical

- Certified to meet UL 1598 standards for wet location and 40°C ambient.

warranty

- 5 Year Limited Warranty.

Green Choice: BLN70WLU-ASM-FGS-BK



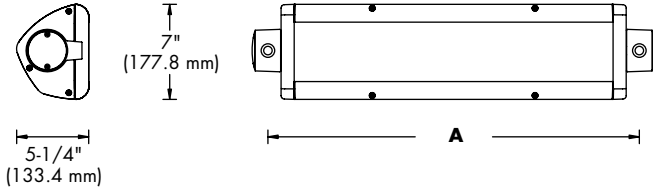
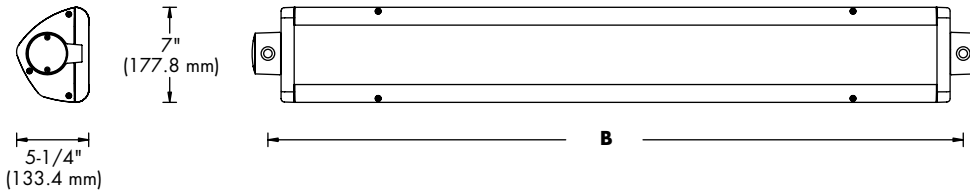
Accessories (Order Separately)
For additional descriptions of mounting accessories, refer to sheet number DC-47800.

General Notes:
All options are factory installed. All accessories are field installed. Data subject to change without notice.

Predicted L₇₀ Lifetime:
25°C Ambient - >60,000 hours
40°C Ambient - >60,000 hours
(based upon LED manufacturer's LM-80 data and in-situ laboratory testing)

(Consult factory for other colors)

dimensions

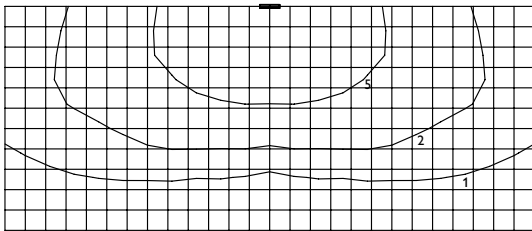


	A	B
End Hub to End Hub	27-3/8" (695.3mm)	51-1/4" (1301.8mm)
End Hub to Row Mount Hub	27-11/16" (703.3mm)	51-9/16" (1309.7mm)
Row Mount Hub to Row Mount Hub	28" (711.2mm)	51-7/8" (1317.6mm)

photometry

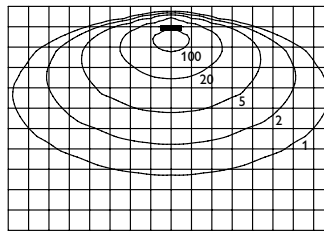
Catalog No. BLN70WLU-ASM
 Test No. 29476
 Lamp Type LED
 Wattage 69
 Lumens 5,590
 Lumens/Watt 81.0

Path Light (12 ft. mounting height)



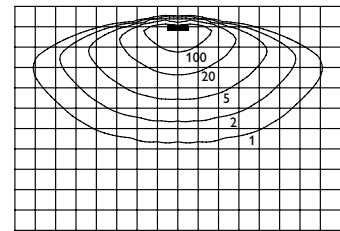
2' Grid Shown

Wall Grazing (2 ft. mounting height)



2' Grid Shown

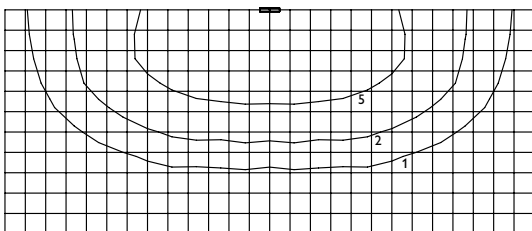
Sign Light (2 ft. mounting height)



2' Grid Shown

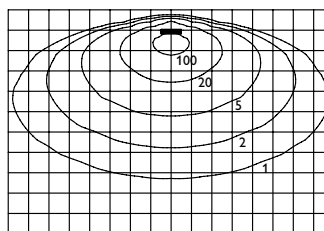
Catalog No. BLN70WLU-ASM-FGS
 Test No. 29490
 Lamp Type LED
 Wattage 70
 Lumens 5,103
 Lumens/Watt 72.9

Path Light (12 ft. mounting height)



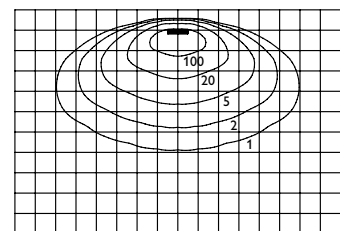
2' Grid Shown

Wall Grazing (2 ft. mounting height)



2' Grid Shown

Sign Light (2 ft. mounting height)



2' Grid Shown



©2011 Philips Day-Brite
 All rights reserved.
 776 South Green Street • Tupelo, MS 38804
 p. 800.234.1890 • f. 662.841.5501 • www.daybrite.com
 Canadian Division
 189 Bullock Drive • Markham, Ontario L3P 1W4
 p. 905.294.9570 • f. 905.294.9811

Contact Factory for Additional Configurations.
 Specifications are subject to change without notice.
 Consult website for latest version of this spec sheet.