

**2 Lamp T8  
12 Cell**

**2 lamp replacement for standard  
3 lamp parabolics**

**APPLICATION**

- A single 2 lamp LPW provides 10% energy savings and 11% greater light output compared to a standard 3 lamp 18 cell T8 electronic parabolic.
- When used to light a space to the same illumination level, 2 lamp LPW luminaires provide 19% energy savings compared to standard 3 lamp 18 cell T8 electronic parabolics.
- 10% fewer luminaires and 40% fewer lamps are required to achieve the same light levels as standard 3 lamp parabolics, reducing installation and maintenance costs.
- 20% longer lamp life (24,000 hours vs. 20,000) provides longer relamping intervals for lower maintenance costs.
- Payback of additional cost (compared to standard 3 lamp parabolic) in less than one year.
- Shipped with factory installed high lumen output/high color rendering T8 lamps.
- Designed for air supply/return through side slots and/or heat transfer through openings in top. Select the appropriate catalog no. for air function desired. Air boots by others.

**CONSTRUCTION/FINISH**

- Housing is multi-stage phosphate treated for maximum corrosion resistance and finish coat is high reflectance baked white enamel.
- Flat black finish inside perimeter reveal for "floating door" appearance.
- Built in (UL listed, patented) grid clips designed for use with standard 1-1/2" high grid ceiling members.

- Standard wireway cover is designed to accommodate small can ballasts. Specification (or field installation) of large can standard/emergency ballasts will require the use of a larger wireway cover.
- One piece unitized body including end plates for added rigidity.

**ELECTRICAL**

- Electronic ballast standard.
- Class P, HPF ballasts comply with ©Federal Ballast Law (Public Law 100-357,1988).
- UL listed for damp locations. Canadian certified optional.
- Self-contained fluorescent emergency power packs can be incorporated. Bodine LP series emergency ballasts are recommended for use with the standard wireway cover. DEB series emergency ballasts may be used with the larger wireway cover.

**ENCLOSURES**

- 12 cell parabolic-shaped louvers closely controlled for uniform low-brightness appearance, and interlocked to avoid vibration.
- Choice of low iridescence anodized aluminum (AL), specular (FL), or white louver finishes.
- Lengthwise shielding is 19°. Crosswise shielding is 26°.
- Bottom aluminum flange has mitered corners and fits flush with ceiling.
- Can be hinged and latched from either side.
- Shipped with plastic film to keep out construction dirt.
- Guide-post spring loaded latches standard.

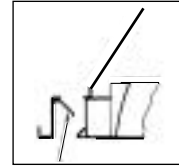
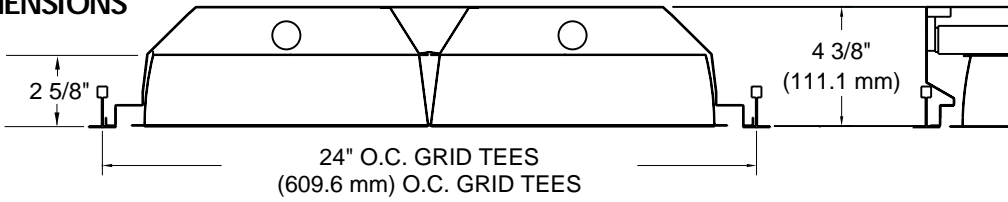
**CATALOG NUMBER**

<b>2</b>				<b>2</b>	<b>32</b>	-	<b>26</b>	-		-		-		-	
<b>WIDTH</b> 2 - 2'	<b>CEILING TYPE</b> F - Flange G - Grid T - Screw Slot Z - Z Spline Modular			<b>NO. OF LAMPS</b> (included) 2	<b>LOUVER CONFIGURATION</b> (cells wide x cells long) 26 - 2 x 6		<b>VOLTAGE</b> 120 277 347 (consult factory for availability)	<b>LAMPS</b> LPT830HL - Lamped with 85+ CRI, 3000K lamps LPT835HL - Lamped with 85+ CRI, 3500K lamps LPT841HL - Lamped with 85+ CRI, 4100K lamps			<b>BALLAST</b> Generic Electronic Ballasts (Brand selected by Day-Brite) Suffix Catalog # with - Ballast Quantity - / - -EB Lamps Per Ballast. Example: -1/2-EB = One 2 Lamp Electronic Ballast.		<b>OPTIONS</b> ASC - Air Slot Covers APC - Air Pattern Control Blades		
<b>FIXTURE FAMILY</b> LPW - Watt Watcher Paralouver LPWC - Canadian Model		<b>AIR FUNCTION</b> A - Air Supply/Return C - Combination (Air & Heat Transfer) H - Heat Transfer S - Static (no air function)		<b>LAMP TYPE/WATTAGE</b> 32 - 32wT8 (48")		<b>LOUVER FINISH</b> AL - Anodized Aluminum Low Iridescence FL - Full Specular Low Iridescence W - Painted White									

# 2' x 4' 2 LAMP WATT WATCHER PARALOUVER

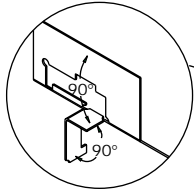


## DIMENSIONS

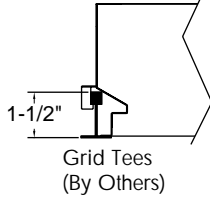


Optional Air Pattern Control (on Air and Combination Units)

- Fully adjustable
  - Closed= Static
  - 45°= Horizontal Air Supply
  - 90°= (fully open) – Vertical Air Supply
- Side Slots may also be used for Return Air to Plenum
- Air Slot Covers are snap in covers for side slots, non-adjustable (installed at factory when ordered).



Grid Clip Open With Screwdriver And Bend Out To 90° and Then Over 90°

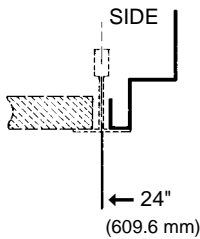


Grid Tees (By Others)

Access Plate

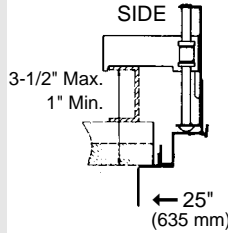
**2 LPW G S 2 32**  
CEILING TYPE

**G = GRID (NEMA G)**



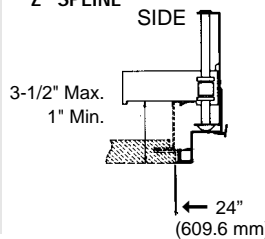
(NEMA Type G)  
Lay-in acoustical ceilings using exposed grid suspension, with tees for fixtures on 24" x 48" spacing.

**F = FLANGE (NEMA F)**



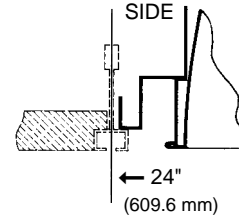
(NEMA Type F)  
Flange for acoustical ceilings using concealed mechanical suspension. Swing-jack mounting brackets: adjustment 3-1/2" max. and 1" min.

**Z = (NEMA M/Z) MODULAR AND "Z" SPLINE**



(NEMA M/Z)  
Modular and "Z" Spline using concealed mechanical suspension. Swing-jack mounting brackets: adjustment 3-1/2" max. and 1" min.

**T = SCREW SLOT (NEMA SS)**



Louvered fixture with louvers at the ceiling plane  
(NEMA Type SS)  
Typical Screw Slot Ceiling System. Bottom of louver is flush with ceiling plane.

## PHOTOMETRIC DATA

CATALOG # 2LPWGS232-26AL-1/2-EB  
TEST #22121 S/MH=1.7

LAMPS = F32 T8  
BALLAST = ELECTRONIC

INPUT WATTS = 75  
BALLAST FACTOR = 1.20

LER = 76

COMPARATIVE YEARLY LIGHTING ENERGY COST PER 1000 LUMENS = \$3.16 BASED ON 3000 HRS. AND \$.08 PER KWH.

FIXTURE EFFICIENCY= 76.6%

CANDLEPOWER				
Angle	End	45	Cross	
0	1624	1624	1624	
5	1630	1623	1603	
10	1601	1599	1584	
15	1560	1560	1561	
20	1507	1514	1539	
25	1442	1467	1537	
30	1367	1417	1591	
35	1285	1392	1686	
40	1193	1396	1815	
45	1088	1403	1917	
50	970	1379	1846	
55	826	1231	1317	
60	630	894	546	
65	362	450	291	
70	118	151	144	
75	40	45	47	
80	17	17	16	
85	6	6	5	

## MAINTAINED ILLUMINATION TABLE- Square Feet/Fixture\*

- 80-50-20 Reflectances (Ceiling-Wall-Floor)
- LLF = 1.03 3200 Lumens/Lamp very clean
- Room width divided by room height = 5 or more, 2 or 1

Fixture Size & # of Lamps	Room Width Room Height =	Approx. Area (Sq. ft.) per Fixture				
		10 ft-c	30 ft-c	50 ft-c	70 ft-c	100 ft-c
2x4	5	-	-	107	76	54
2-lamp	2	-	124	74	53	37
	1	-	89	54	38	-

\*Observe Fixture S/MH Requirements for Specific Applications

## AVERAGE LUMINANCE CD/SQ.M WITH 3200 LUMEN LAMPS

ANGLE	END	45°	CROSS
45	2591	3340	4565
55	2425	3613	3866
65	1442	1793	1159
75	260	293	306
85	116	116	97

## TYPICAL V.C.P.'s

Room Size	Mounting Height			
	Lengthwise	Crosswise	8.5	10
30x30	87	77	80	75
40x40	85	81	85	80
60x30	86	82	86	81
60x60	88	85	88	84
100x100	93	90	93	90

## COEFFICIENT OF UTILIZATION

pfc pcc pw RCR	20						70						50					
	70	50	30	70	50	30	70	50	30	70	50	30	70	50	30			
0	91	91	91	89	89	89	84	84	84	84	84	84	84	84	84			
1	84	81	79	82	80	77	77	75	75	75	75	75	75	75	75			
2	78	71	67	76	70	66	68	64	64	64	64	64	64	64	64			
3	70	64	57	68	61	56	59	56	56	56	56	56	56	56	56			
4	65	56	50	63	55	48	53	47	47	47	47	47	47	47	47			
5	59	50	44	57	48	42	47	41	41	41	41	41	41	41	41			
6	55	45	38	54	44	38	42	36	36	36	36	36	36	36	36			
7	51	40	34	48	40	34	39	33	33	33	33	33	33	33	33			
8	46	36	29	46	35	29	34	29	29	29	29	29	29	29	29			
9	44	34	27	42	33	27	32	27	27	27	27	27	27	27	27			
10	40	30	25	40	30	25	29	23	23	23	23	23	23	23	23			

## LIGHT DISTRIBUTION

DEGREES	LUMENS	% LAMP	% FIXTURE
0-30	1278	20.6	26.9
0-40	2183	35.2	46.0
0-60	4287	69.1	90.3
0-90	4749	76.6	100.0

LLF = 1.03 LLF = LIGHT LOSS FACTOR LLF = LDD LLD LDF BF LDD = VERY CLEAN 0.94 CLEAN 0.90  
LLD = 0.91 @ 40% RATED LAMP LIFE BF = 1.20 ELECTRONIC BALLAST & F32T8 LAMP (RELAMP AT 70% LAMP LIFE)

The photometric results were obtained in the Day-Brite Lighting Laboratory which is NVLAP accredited by the National Institute of Standards and Technology.



260-PLV

DAY-BRITE LIGHTING  
776 South Green Street • Tupelo, Mississippi 38804 • PH: (662) 842-7212 • FAX: (662) 841-5501  
CANADIAN DIVISION  
189 Bullock Drive • Markham, Ontario L3P 1W4 • PH: (905) 294-9570 • FAX: (905) 294-9811

©2002 DAY-BRITE LIGHTING  
DB 01-02-2.5M  
DAY-BRITE RESERVES THE RIGHT TO MAKE CHANGES WITHOUT NOTICE.

