

4' OR 8'
2 or 3 Lamp
T8 or T5

APPLICATION

- Designed for modern T8 and T5 sources.
- Easy to install industrial luminaire.
- Designed for individual or continuous row mounting.
- Shallow profile minimizes visual size and enables installation in low height applications.
- Wide light distribution and high optical efficiency allow wide luminaire spacing.
- “Herringbone” slots in apertured reflector provide approximately 15% uplight in a smooth, even 170° uplight distribution.

CONSTRUCTION/FINISH

- Solid or apertured reflectors.
- Housing is painted after fabrication with high reflectance white polyester powder finish.
- Multiple knockouts and optional sliding hanger brackets offer convenient installation.

- Locking sockets ensure lamps make positive contact and are positively retained.

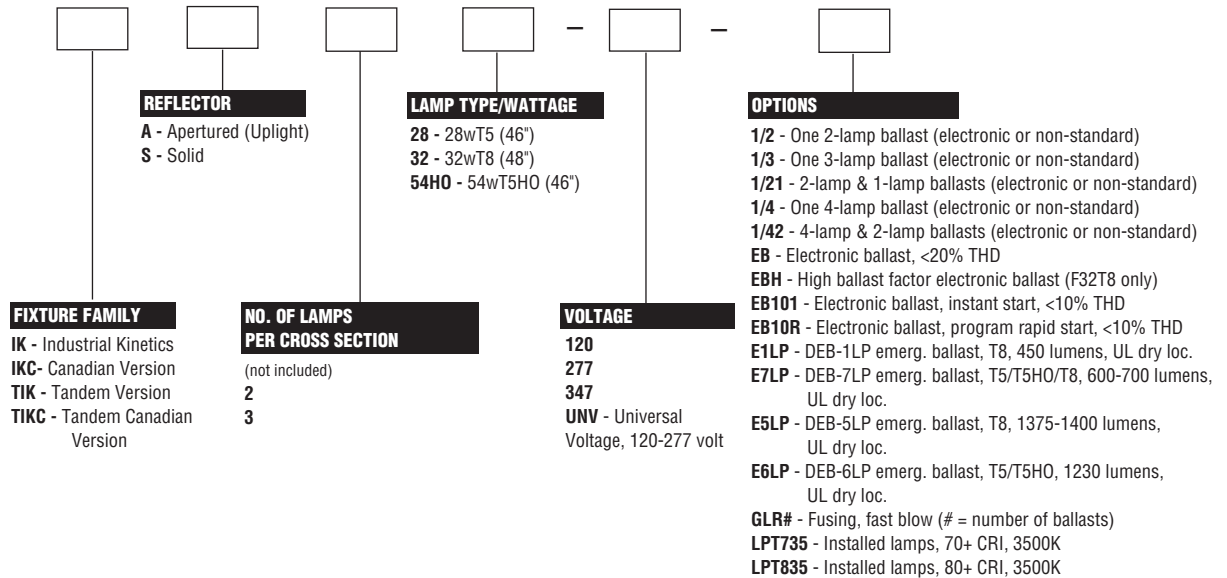
ELECTRICAL

- Class P, HPF ballasts comply with ©Federal Ballast Law (Public Law 100-357, 1988).
- UL listed for damp locations. Canadian certified optional.
- (Low-Profile) Self-contained fluorescent emergency power packs can be incorporated. (UL dry location)
- Energy saving electronic ballasts are standard.

ACCESSORIES

- **E4-HKK** – sliding hanger bracket with 7/8" hole (one)
- **E4-HKS** – sliding hanger bracket with 1/4" x 1" slot (one)
- **E4-CHK** – Chain hanger hooks (pair) (chains not included, requires FL-123 or similar)
- **IK-173** – 4' wire guard
- **FL-123** – 5' chain set (two chains) (**requires E4-CHK**)
- For stem kits refer to spec. sheet 950-SS.
- For aircraft cable hanger kits refer to spec. sheet 950-SS.

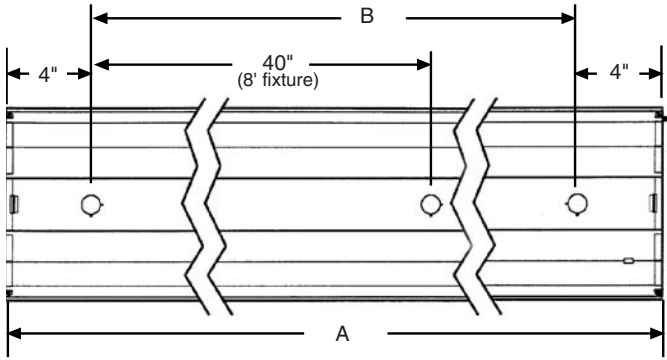
CATALOG NUMBER



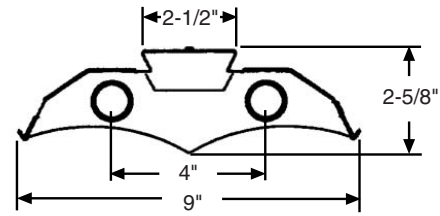
4' OR 8' INDUSTRIAL KINETICS



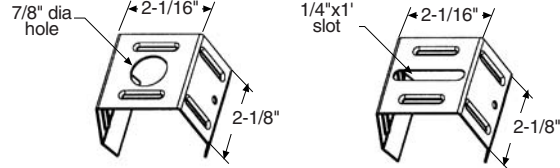
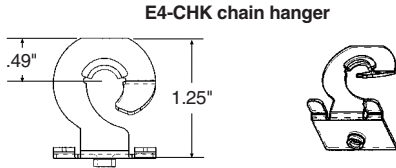
DIMENSIONS



DIM A		DIM B	
4' Fixture	48"	4' Fixture	40"
8' Fixture	96"	8' Fixture	88"



E4-HKK mounting bracket E4-HKS mounting bracket



PHOTOMETRIC DATA

CATALOG # IKA232-120-1/2-EB
TEST #19716 S/MH= 1.3

LAMPS = F32 T8 INPUT WATTS = 59
BALLAST = ELECTRONIC BALLAST FACTOR = .88

LER = F-73

COMPARATIVE YEARLY LIGHTING ENERGY COST PER 1000 LUMENS = **\$3.28** BASED ON 3000 HRS. AND \$.08 PER KWH.

FIXTURE EFFICIENCY= 95.1%

CANDLEPOWER

Angle	End	45	Cross
0	1463	1463	1463
5	1459	1462	1459
15	1411	1425	1430
25	1310	1344	1363
35	1173	1225	1254
45	995	1067	1115
55	783	875	978
65	546	700	827
75	295	504	609
85	67	184	206
95	6	54	82
105	27	43	72
115	58	46	60
125	92	58	65
135	125	96	79
145	146	125	110
155	170	156	151
165	189	182	177
175	197	199	199

MAINTAINED ILLUMINATION TABLE- Square Feet/Fixture*

- 80-50-20 Reflectances (Ceiling-Wall-Floor)
- LLF = 0.75 2850 Lumens/Lamp very clean
- Room width divided by room height = 5 or more, 2 or 1

Fixture Size & # of Lamps	Room Width Room Height =	Approx. Area (sq. ft.) per Fixture				
		10 ft-c	30 ft-c	50 ft-c	70 ft-c	100 ft-c
4' 2 LAMP	5	-	136	82	58	41
	2	-	90	54	38	-
	1	-	65	39	-	-

*Observe Fixture S/MH Requirements for Specific Applications

COEFFICIENT OF UTILIZATION

pfc pcc pw	20			70			50		
	70	50	30	70	50	30	50	30	50
RCR	111	111	111	107	107	107	101	101	101
0	111	111	111	107	107	107	101	101	101
1	100	94	90	95	92	88	85	82	82
2	90	81	75	86	79	72	73	68	68
3	81	70	63	79	68	60	65	57	57
4	75	63	54	71	60	53	56	50	50
5	68	56	46	66	54	46	51	44	44
6	63	50	40	60	48	40	46	39	39
7	57	45	36	56	44	35	41	34	34
8	54	40	33	52	40	32	38	30	30
9	51	38	29	48	36	28	34	28	28
10	46	34	27	46	34	26	32	26	26

AVERAGE LUMINANCE CD/SQ.M WITH 2850 LUMEN LAMPS

ANGLE	END	45°	CROSS
45	5235	5614	5866
55	5079	5675	6343
65	4806	6162	7280
75	4240	7244	8754
85	2860	7854	8793

TYPICAL V.C.P.'s

Room Size	Mounting Height			
	Lengthwise		Crosswise	
	8.5	10	8.5	10
30x30	49	52	54	57
40x40	47	49	51	53
60x30	53	56	56	59
60x60	44	46	47	49
100x100	41	43	40	45

LIGHT DISTRIBUTION

DEGREES	LUMENS	% LAMP	% FIXTURE
0-30	1161	20.4	21.4
0-40	1925	33.8	35.5
0-60	3537	62.1	65.2
0-90	4904	86.0	90.4
90-180	518	9.1	9.6
0-180	5422	95.1	100.0

LLF = .75 LLF = LIGHT LOSS FACTOR LLF = LDD X LLD X BF LDD = VERY CLEAN 0.94 CLEAN 0.90
LLD = 0.91 @ 40% RATED LAMP LIFE BF = 0.88 ELECTRONIC BALLAST & F32T8 LAMP (RELAMP AT 70% LAMP LIFE)

NVLAP The photometric results were obtained in the Day-Brite Lighting Laboratory which is NVLAP accredited by the National Institute of Standards and Technology.

1435.6-IF

DAY-BRITE LIGHTING • www.daybritelighting.com
776 South Green Street • Tupelo, Mississippi 38804 • PH: (662) 842-7212 • FAX: (662) 841-5501
CANADIAN DIVISION
189 Bullock Drive • Markham, Ontario L3P 1W4 • PH: (905) 294-9570 • FAX: (905) 294-9811
©NOVEMBER 2009 DAY-BRITE LIGHTING DAY-BRITE RESERVES THE RIGHT TO MAKE CHANGES WITHOUT NOTICE.

PHILIPS
Day-Brite