

**1 or 2 Lamp  
T5, T5HO, T8 or T12**

**CONSTRUCTION/FINISH**

- Prismatic acrylic lens hinges from either side for easy maintenance. Straight sides eliminate dust build up.
- Housing is multi-stage phosphate treated for maximum corrosion resistance and finish coat is high reflectance baked white enamel.
- Economical alternative to wrap-around and strip luminaires.
- Heavy duty channel of code gauge die formed steel.
- Steel end caps are standard in white. Optional, decorative injection molded end caps for fixtures are available in white, black, solid oak, or walnut finishes.

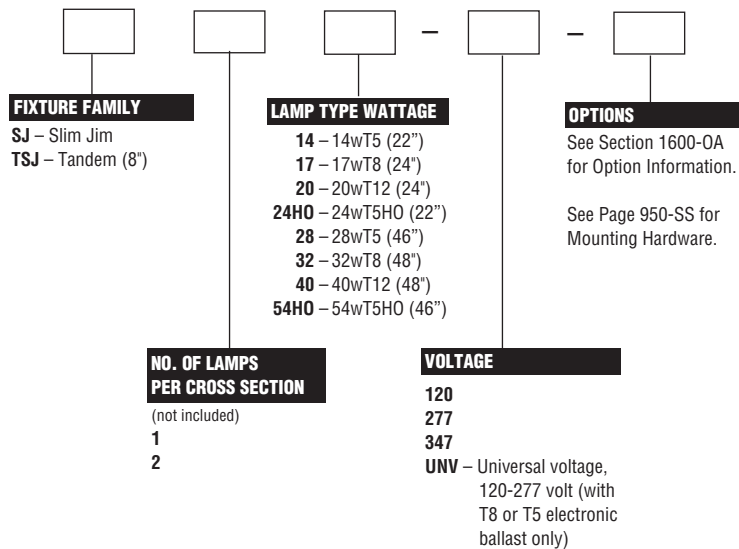
**ELECTRICAL**

- UL listed for direct mounting on low-density ceilings and damp locations.
- Trigger start (20w), or Rapid Start (40w) class P, ©Ballasts. High Power Factor where available.
- Lampholders snap into socket plates and may be individually replaced or rewired.
- Self-contained fluorescent emergency power packs can be incorporated. UL listed for dry location.

**ACCESSORIES**

- **CK-4** – Closure band for continuous row mounting.
- Decorative end caps – See below.

**CATALOG NUMBER**



OPTIONAL DECORATIVE END CAPS (PAIR)				
WHITE INJECTION MOLDING	BLACK INJECTION MOLDING	BLACK STEEL	OAK	WALNUT
CK-2W	CK-2B	CKB-2	CKO-2	CKW-2

**NOTES:**

- With generic Electronic Ballasts (Brand selected by Day-Brite)  
Suffix Catalog # with- **Ballast Quantity** - / - **EB Lamps Per Ballast.**

**Example: -1/1-EB** = One 1 Lamp Electronic Ballast.

**Example: -1/2-EB** = One 2 Lamp Electronic Ballast.

\* **20WTS** - 120v is normal power factor, 277v is high power factor.

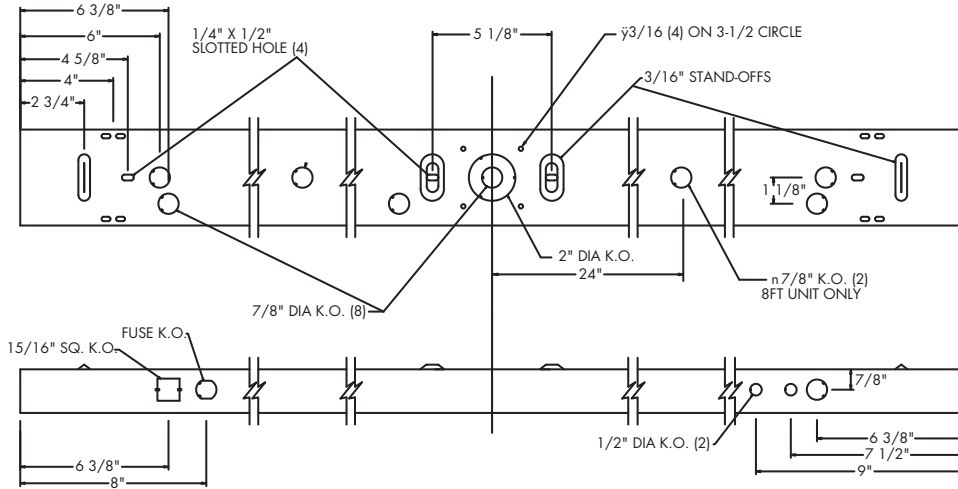
**Example: -1/4-EB** = One 4 Lamp Electronic Ballast.

# SLIM JIM CORRIDOR

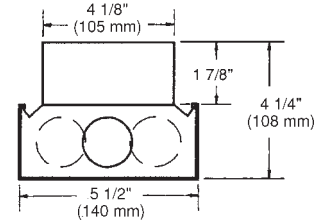


## DIMENSIONS

NOTE: 2' & 3' MODELS INCLUDE ONLY OUTBOARD DETAILS



DIM "A"	
2' FIXTURE (610 mm)	24"
4' FIXTURE (1219 mm)	48"
8' FIXTURE (2438 mm)	96"



## PHOTOMETRIC DATA

CATALOG # SJ132-1/1-EB  
TEST #41969 S/MH=1.5

LAMPS = F32 T8 BALLAST = ELECTRONIC  
INPUT WATTS = 34 BALLAST FACTOR = 1.00

LER = FW-72

COMPARATIVE YEARLY LIGHTING ENERGY COST PER 1000 LUMENS = \$3.33 BASED ON 3000 HRS. AND \$.08 PER KWH.

FIXTURE EFFICIENCY= 84.3%

CANDLEPOWER				
Angle	End	45	Cross	
0	595	595	595	
5	597	596	597	
15	576	601	622	
25	531	597	636	
35	463	551	584	
45	351	437	442	
55	210	275	276	
65	126	179	195	
75	72	126	193	
85	18	96	236	
95	0	122	287	
105	3	179	298	
115	3	170	259	
125	5	93	150	
135	5	41	62	
145	7	33	46	
155	7	23	34	
165	7	11	21	
175	5	4	5	

### MAINTAINED ILLUMINATION TABLE- Square Feet/Fixture\*

- 80-50-20 Reflectances (Ceiling-Wall-Floor)
- LLF = 0.83 2900 Lumens/Lamp very clean
- Room width divided by room height = 5 or more, 2 or 1

Fixture Size & # of Lamps	Room Width Room Height =	Approx. Area (sq. ft.) per Fixture				
		10 ft-c	30 ft-c	50 ft-c	70 ft-c	100 ft-c
4' 1-Lamp	5	-	65	39	-	-
	2	133	44	-	-	-
	1	97	32	-	-	-

\*Observe Fixture S/MH Requirements for Specific Applications

### AVERAGE LUMINANCE CD/SQ.M WITH 2900 LUMEN LAMPS

ANGLE	END	45°	CROSS
45	2913	2956	2522
55	2149	2124	1713
65	1750	1671	1371
75	1633	1546	1623
85	1212	1797	2565

### TYPICAL V.C.P.'s

Room Size	Mounting Height	
	Lengthwise	Crosswise
	8.5	10
30x30	69	73
40x40	66	69
60x30	70	73
60x60	63	65
100x100	60	61

LLF = .83 LLF = LIGHT LOSS FACTOR LLD = LDD X LLD X BF LDD = VERY CLEAN 0.94 CLEAN 0.90  
LLD = 0.88 @ 40% RATED LAMP LIFE BF = 1.00 ELECTRONIC BALLAST & T8 LAMP (RELAMP AT 70% LAMP LIFE)

### COEFFICIENT OF UTILIZATION

pfc pcc pw RCR	20			70			50		
	70	50	30	70	50	30	50	30	
0	94	94	94	91	91	91	81	81	
1	85	81	78	81	78	73	69	68	
2	78	70	65	73	68	63	60	56	
3	70	63	56	67	59	54	54	48	
4	65	56	47	61	53	46	47	42	
5	59	50	41	56	46	40	42	38	
6	56	45	36	53	42	35	39	34	
7	51	40	33	48	39	32	35	29	
8	47	36	29	45	34	28	33	27	
9	45	34	27	41	32	26	29	25	
10	41	30	25	40	29	23	28	22	

### LIGHT DISTRIBUTION

DEGREES	LUMENS	% LAMP	% FIXTURE
0-30	499	17.2	20.4
0-40	836	28.8	34.2
0-60	1400	48.3	57.3
0-90	1838	63.4	75.2
90-180	606	20.9	24.8
0-180	2444	84.3	100.0

## PHOTOMETRIC DATA

CATALOG # SJ232-1/2-EB  
TEST #41970 S/MH=1.4

LAMPS = F32 T8 BALLAST = ELECTRONIC  
INPUT WATTS = 56 BALLAST FACTOR = .92

LER = FW-74

COMPARATIVE YEARLY LIGHTING ENERGY COST PER 1000 LUMENS = \$3.24 BASED ON 3000 HRS. AND \$.08 PER KWH.

FIXTURE EFFICIENCY= 78.6%

CANDLEPOWER				
Angle	End	45	Cross	
0	1236	1236	1236	
5	1239	1239	1240	
15	1194	1240	1275	
25	1095	1196	1253	
35	943	1063	1098	
45	713	813	813	
55	413	537	532	
65	247	357	403	
75	135	247	408	
85	33	188	483	
95	0	247	512	
105	4	291	388	
115	8	192	277	
125	10	143	217	
135	13	99	156	
145	13	64	95	
155	13	41	61	
165	11	17	34	
175	13	9	12	

### MAINTAINED ILLUMINATION TABLE- Square Feet/Fixture\*

- 80-50-20 Reflectances (Ceiling-Wall-Floor)
- LLF = 0.76 2900 Lumens/Lamp very clean
- Room width divided by room height = 5 or more, 2 or 1

Fixture Size & # of Lamps	Room Width Room Height =	Approx. Area (sq. ft.) per Fixture				
		10 ft-c	30 ft-c	50 ft-c	70 ft-c	100 ft-c
4' 2-Lamp	5	-	113	68	48	34
	2	-	77	46	33	-
	1	-	56	34	-	-

\*Observe Fixture S/MH Requirements for Specific Applications

### AVERAGE LUMINANCE CD/SQ.M WITH 2900 LUMEN LAMPS

ANGLE	END	45°	CROSS
45	5918	5499	4640
55	4226	4149	3301
65	3430	3334	2834
75	3062	3031	3432
85	2222	3519	5251

### TYPICAL V.C.P.'s

Room Size	Mounting Height	
	Lengthwise	Crosswise
	8.5	10
30x30	53	57
40x40	50	52
60x30	53	57
60x60	47	49
100x100	45	46

LLF = .76 LLF = LIGHT LOSS FACTOR LLD = LDD X LLD X BF LDD = VERY CLEAN 0.94 CLEAN 0.90  
LLD = 0.88 @ 40% RATED LAMP LIFE BF = 0.92 ELECTRONIC BALLAST & T8 LAMP (RELAMP AT 70% LAMP LIFE)

### COEFFICIENT OF UTILIZATION

pfc pcc pw RCR	20			70			50		
	70	50	30	70	50	30	50	30	
0	90	90	90	85	85	85	78	78	
1	81	77	72	77	72	69	67	64	
2	72	67	60	69	64	58	58	55	
3	67	58	53	64	56	51	52	46	
4	61	52	46	57	50	44	46	40	
5	56	46	40	54	45	39	41	35	
6	52	41	34	50	40	34	38	32	
7	48	38	32	46	36	30	34	28	
8	45	34	28	42	34	28	30	26	
9	41	32	26	40	30	25	28	23	
10	40	28	23	38	28	23	27	22	

### LIGHT DISTRIBUTION

DEGREES	LUMENS	% LAMP	% FIXTURE
0-30	1014	17.5	22.2
0-40	1666	28.7	36.6
0-60	2741	47.3	60.1
0-90	3612	62.3	79.2
90-180	947	16.3	20.8
0-180	4558	78.6	100.0

1029.3-WP

DAY-BRITE LIGHTING • www.daybritelighting.com  
776 South Green Street • Tupelo, Mississippi 38804 • PH: (662) 842-7212 • FAX: (662) 841-5501  
CANADIAN DIVISION  
189 Bullock Drive • Markham, Ontario L3P 1W4 • PH: (905) 294-9570 • FAX: (905) 294-9811  
©JANUARY 2010 DAY-BRITE LIGHTING DAY-BRITE RESERVES THE RIGHT TO MAKE CHANGES WITHOUT NOTICE.

PHILIPS  
Day-Brite