

# OM63 I5T9CMHTRSLOPE

## 6" T9 CMH Sloped Ceiling Open Downlight

CAT. NO:

TYPE: PROJECT:



### PRODUCT INFORMATION

#### Applications

A ceramic metal halide downlight that is ideal for ceilings sloped 0-30°. Ellipsoidal reflector provides superior beam control, maximizing the amount of light on the workplane with optimum quality. Ideal applications are churches, lobbies, atriums, and other medium to high level ceilings where dimming is needed.

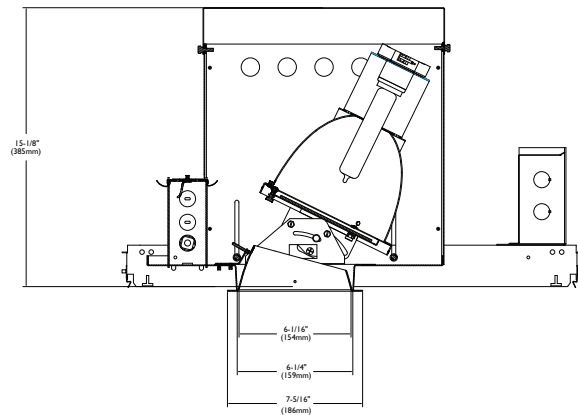
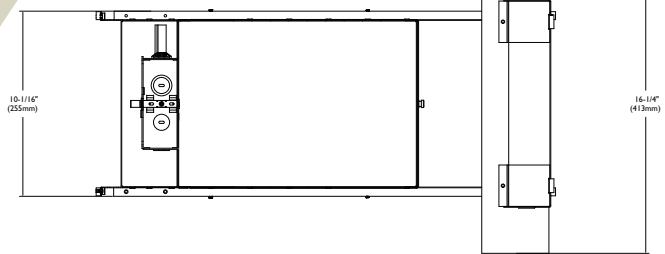
#### Specifications

- Mounting pan** - Precision die-formed 20 gauge galvanized steel mounting pan. Matte black finish.
- Housing** - 20 gauge steel housing, matte black finish. Internal upper clear specular Alzak™ reflector engineered for precise optical control of beam.
- Insight Aiming™** - Pendulum provides accurate aiming of the optical assembly for precise beam placement. When the crosshairs(+) are centered in the sight (o), the optical is perfectly vertical. Patent Pending. Two thumb screws provide tilt locking.
- Ballast** - Electronic high power factor pulse start ballast. 200-277Volt, 0-10Vdimming. 50-100% standard.
- Installation** - Housing has pre-installed C-channel with vertical and horizontal adjustments. Junction box and mounting brackets are accessible from below ceiling.
- Trim** - Mechanically fastened (patent pending), precision spun .051 aluminum, self flanged with clear specular Alzak™ finish. Trim includes a lamp shatter guard of tempered safety glass. Standard is flat flange painted white. Optional polished flange matching finish available, add FF to catalog number.
- Baffle** - Precision machined .051 aluminum with deep grooves to eliminate aperture glare, anodized matte black or matte white finish. Standard flat flange is painted white. Optional black flange with black baffle available, add FF to catalog number.
- Lamp (included)** - 90+ CRI, 20,000 hour life. Available in 3000K or 4200K. Rated for use in open or enclosed fixtures.
- Socket enclosure** - Die cast aluminum heat sink, mini-can screw base porcelain socket with nickel-plated copper screw shell and 250°C Teflon® wire.
- Junction box** - Extra large 43.75-cubic inch 16 gauge galvanized steel with snap-on covers. Approved for through wiring with up to 8 #12 AWG conductors.
- Relamping** - Toolless top relamping.
- Thermal protection** - A thermal protection device which meets all U.L. and NEC requirements is standard.
- U.L. Listed** - For use in damp locations and marked spacings. Approved for through branch circuit wiring. I.B.E.V. union made.



PATENT PENDING

6



Canadian Specifications may vary from these shown, consult Canadian Division.

### CATALOG SYSTEM AND OPTIONS

EXAMPLE OF COMPLETE CATALOG NUMBER: **OM63 I5T9CMHTRSLOPECS-LP930277**

OMEGA Aprt.	Lamp (included)	Open Trim	Top Relamping	Product Family	Distribution	Reflector Finish	Frame Options	Lamp (required)	Supply Voltage
OM6 6" aperture	315 T9 CMH 210 T9 CMH	P protected lamp BLANK enclosed rated lamp	TR top relamp	SLOPE 0-30° locking tilt	MD medium distribution  ND narrow distribution	BB Black Baffle CS Clear Specular CSS Clear Semi-Specular HZ Haze BK Black GS Gold Specular WT Wheat PW Pewter FF Finish Flange (As suffix to color)	FZ208 208 volt fusing  FZ240 240 volt fusing  FZ277 277 volt fusing	LP930 3000K  LP942 4200K	208 208 volt  240 240 volt  277 277 volt



**FIVE YEAR  
Warranty**

\*0-10 volt dimming standard.  
\*\* Open and enclosed rated lamps available.



PHILIPS OMEGA  
776 South Green St., Tupelo, MS 38804  
Phone 662.842.7212 FAX 662.841.5501

PHILIPS DAY-BRITE CANADA  
189 Bullock Drive, Markham, Ontario, Canada L3P 1W4  
Phone 905.294.9570 FAX 800.268.0003

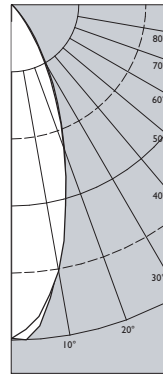
**OM6210T9CMHTRSLOPEMD-CSLP930277**

**Clear Specular Reflector**

Report number: 28779  
 Lamp: (1)210WMH (medium distribution)  
 Fixture Efficiency: 42.9%  
 S/MH Ratio (0 degree plane): 0.6  
 (90 degree plane): 0.6  
 Total Fixture Lumens: 9878  
 IES file: 28779.IES  
 Beam Angle: 37.07

LIGHTING PERFORMANCE DATA		
CEILING HEIGHT* (FT.)	INITIAL FOOTCANDLES	BEAM DIAMETER (FT.-IN.)
18	88.1	10-10
20	69.1	12-3
22	55.7	13-8
24	45.8	15-1
26	38.3	16-6

DISTRIBUTION CURVE



DEGREES	CANDELA		FOOT-LAMBERTS
	AT 0°	AT 90°	
90	1	2	
85	0	2	184
75	2	2	124
65	3	5	151
55	17	16	453
45	292	290	6585
35	2121	2072	
25	6243	6333	
15	12653	12718	
5	19405	19126	
0	20389	20389	

COEFFICIENTS OF UTILIZATION ZONAL CAVITY METHOD

Effective Floor Cavity Reflectance 0.20

RC	Effective Floor Cavity Reflectance 0.20					
	80		70		50	
RW	50	30	50	30	50	30
0	51	51	51	51	50	50
1	48	47	46	46	47	46
2	46	45	44	41	46	44
3	45	42	40	39	44	41
4	42	40	38	35	41	40
5	40	38	35	34	40	38
6	39	35	34	32	39	35
7	38	34	32	30	36	34
8	35	33	30	28	35	33
9	34	30	28	28	34	30
10	34	29	28	26	33	29

**OM6210T9CMHTRSLOPEND-CSLP930277**

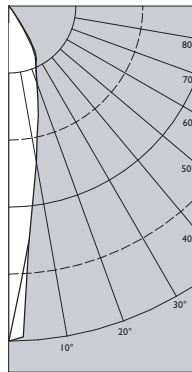
6

**Clear Specular Reflector**

Report number: 28778  
 Lamp: (1)210WMH (narrow distribution)  
 Fixture Efficiency: 59.1%  
 S/MH Ratio (0 degree plane): 0.3  
 (90 degree plane): 0.3  
 Total Fixture Lumens: 13561  
 IES file: 28778.IES  
 Beam Angle: 17.41

LIGHTING PERFORMANCE DATA		
CEILING HEIGHT* (FT.)	INITIAL FOOTCANDLES	BEAM DIAMETER (FT.-IN.)
24	108.7	6-8
26	91.0	7-3
28	77.3	7-10
30	66.4	8-5
32	57.7	9-0

DISTRIBUTION CURVE



DEGREES	CANDELA		FOOT-LAMBERTS
	AT 0°	AT 90°	
90	1	2	
85	0	2	184
75	2	2	108
65	2	3	95
55	13	8	293
45	79	84	1838
35	1807	1827	
25	9151	9523	
15	16629	17072	
5	34369	35059	
0	50241	50241	

COEFFICIENTS OF UTILIZATION ZONAL CAVITY METHOD

Effective Floor Cavity Reflectance 0.20

RC	Effective Floor Cavity Reflectance 0.20					
	80		70		50	
RW	50	30	50	30	50	30
0	69	69	69	69	68	68
1	67	66	65	64	66	65
2	65	61	59	58	63	60
3	61	58	56	54	60	57
4	59	56	53	51	58	55
5	56	53	50	47	56	53
6	55	51	47	46	54	50
7	53	47	45	42	52	47
8	51	46	42	40	50	46
9	48	44	40	39	48	44
10	46	42	40	38	46	41

Consult factory for additional photometrics @ [www.omegalighting.com](http://www.omegalighting.com)

\*Readings at working plane, 2'6" above floor: Beam Angle and Diameter Cutoff at 50% of max.  
 Candlepower Coefficients used at effective reflectances of: 70% Ceiling, 50% Walls, 20% Floor

To convert values for optional reflector colors, multiply by:  
 Gold .90      Bronze .82      Pewter .87

Additional photometric test files are available @ [omegalighting.com](http://omegalighting.com)



PHILIPS OMEGA  
 776 South Green St., Tupelo, MS 38804  
 Phone 662.842.7212 FAX 662.841.5501

PHILIPS DAY-BRITE CANADA  
 189 Bullock Drive, Markham, Ontario, Canada L3P 1W4  
 Phone 905.294.9570 FAX 800.268.0003