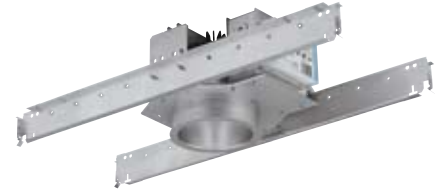


## Architectural Downlighting

### OM4LED

#### 4" LED 1000 Lumen Downlight



#### Specifier's Reference

Project
Type
Model No.
Comments

### application

- Philips Omega Revelation LED combines MesoOptics® diffusion with the proprietary remote phosphor technology to produce one of the most efficient and advanced LED systems available for general illumination.

### light engine

- Omega mixing chamber/optical assembly: Remote phosphor technology provides increased efficiency and color stability by redirecting back reflected light. Patented Meso Optic and phosphor lens assembly converts high brightness blue light into white light for an even diffused pattern, eliminating bright spots often created by individual LEDs. This technology provides consistent, stable color with CCT color control of +/- 100K over the life of the light engine and provides 20% higher efficiency.
- LED Array: The LED Array consists of a metal core circuit board with 16 high brightness royal blue LEDs.
- Color: Available in three CCT options, 3000K, 3500K or 4000K with 80CRI +/-2%.
- Electrical: The power supply/driver features Advance Intelli-volt 120-277VAC 50/60Hz, with 0-10V analog dimming capability. The power supply is overload and short circuit protected as well as thermally regulated to prevent overheating. Sound rating A. Refer to dimming compatibility spec sheet for complete details. Driver has rated lifetime of 50,000 hours. For more detailed information on the Lutron Hi-Lume A Series Dimming Driver, visit, www.lutron.com.
- Lifetime/Lumen Maintenance: 50,000 hour lifetime at 70% lumen maintenance light engine.

### construction

- Thermal Management: A proprietary die-cast aluminum heat sink allows for easy and toolless installation to the housing yoke. The heat sink is designed to properly maintain junction temperatures in recessed Non-IC applications to provide reliable performance over the life of the light engine. The heat sink incorporates alignment

**tabs** to properly position the heat sink with the housing and rust resistant springs to secure the heat sink and reflector.

- Housing: Precision die stamped 18ga galvanized steel mounting pan and yoke assembly. Allows for ceiling thickness up to 1-3/8". Yoke supports weight of heat sink and light engine assembly to prevent stress on finished reflector.
- Reflector: Precision spun .050 aluminum reflectors are self flanged and snap to heat sink for consistent alignment to the optical assembly. Provides 50 degree visual cutoff to source and source image.
- C-Channels: Revelation c-channels are included and provide vertical and horizontal adjustments. These allow for fast and adjustment free installation in T-bar ceilings with 1/2" tile. C-channels simply snap on grid for proper alignment in 24" O.C. grid systems.
- Junction Box: 16 ga galvanized steel. UL listed for 8 No. 12 AWG, 90C through branch circuit conductors. Allows inspection below ceiling.
- Service: Modular construction allows for easy maintenance of complete system below ceiling. Removing reflector provides easy access to heat sink and light engine assembly. This assembly may be removed by depressing the springs which attach to the yoke and then simply opening protective cover and unplugging the push in connector from the LED board.

### listings & warranty

- ETL, cUL Listed (Suitable for wet location applications.)
- Photometric testing performed using IESNA - LM79 procedures. LED lifetime testing performed using IESNA - LM80 procedures.
- 5 year Warranty

## Green Choice: OM4LED20120-R4LED30KCS

### HOUSING

<b>OM4LED</b>	<b>20</b>		
<b>Family</b>		<b>Voltage</b>	
<b>OM4LED</b>		120 - 120VAC	
4 inch Housing		50/60Hz	
		277 - 277VAC	
		50/60Hz	
		347 - Stepdown	
		(347:120/277)	
	<b>Wattage</b>		<b>Option</b>
	20 - 20 Input Watts		<b>EM</b> - Bodine BSL17C
			Emergency Back-up <sup>1</sup>
			<b>DL</b> - Lutron A Series

### LIGHT ENGINE - REFLECTOR

	<b>R4LED</b>	
	<b>Omega Reflector</b>	
	R4LED - 4" Reflector	
		<b>Reflector Finish</b>
		<b>CS</b> - Clear Specular
		<b>CSS</b> - Clear Semi-Specular
		<b>HZ</b> - Haze
		<b>GS</b> - Gold Specular
		<b>WT</b> - Wheat
		<b>PW</b> - Pewter
		<b>BZ</b> - Bronze
		<b>WH</b> - White, Paint
		<b>FF</b> - Finish Flange
		(as suffix to color)
	<b>CCT</b>	
	30K - 3000K	
	35K - 3500K	
	40K - 4000K	

#### Footnotes

- Delivered lumen output ranges from 500-550lm.

#### General Notes

Lumen output varies depending on CCT and distribution, refer to specific IES files for details

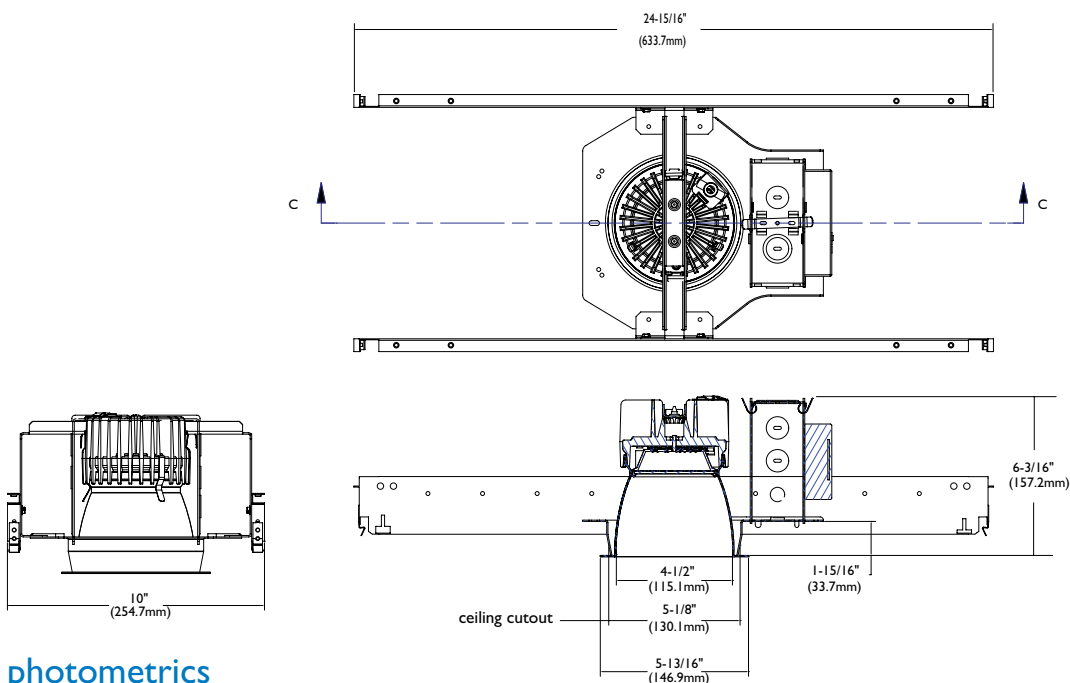
#### Accessories (ordered separately)

**SA4** - Slope ceiling adapter (must specify in 5° increments up to 30°)

energy data

Input Voltage	Input Current	Drive Current	Input Power	LED Power	THD %	Power Factor
120	0.167	350mA	20	18	<10%	>0.9
277	0.072	350mA	20	18	<10%	>0.9

dimensions



photometrics

OM4LED20120-R4LED35KCS

Tested to LM-79 standards.

Clear Specular Reflector\*

Test No.	19113
S/MH	(0 degree plane) 1.2
Lamp Type	(1)16 Royal Blue LEDs
Total Fixture Lumens	1003
IES File	LTL19113
Input Watts	20
Beam Angle	82.59
Luminaire Efficacy	50.0 LPW

Candela

Degrees	At 0°	At 90°	Foot Lamberts
90	0	0	
85	0	0	98
75	1	1	66
65	1	1	94
55	4	4	183
45	106	106	4244
35	531	531	
25	676	676	
15	692	692	
5	633	633	
0	633	633	

Lighting Performance Data

Ceiling Height (feet)	Initial Footcandles	Beam Diameter (Ft/In)
8	20.9	9 - 8
10	11.2	13 - 2
12	7.0	16 - 8
14	4.8	20 - 2
16	3.5	23 - 9

Coefficients of Utilization

pcc	80		70		50	
	50	30	50	30	50	30
pw						
RCR						
0	118	118	118	118	115	115
1	112	110	107	105	111	108
2	107	102	96	93	105	100
3	101	93	88	83	98	92
4	94	86	81	76	93	85
5	89	80	73	68	88	79
6	83	73	68	63	82	73
7	79	68	61	57	78	68
8	75	64	57	53	72	64
9	70	59	53	48	68	58
10	67	56	50	45	66	56



©2011 Philips Omega  
All rights reserved.

776 South Green Street • Tupelo, MS 38804  
p. 800.234.1890 • f. 662.841.5501  
www.omegalighting.com  
Canadian Division  
189 Bullock Drive • Markham, Ontario L3P 1W4  
p. 905.294.9570 • f. 905.294.9811

Contact Factory for Additional Configurations.  
Specifications are subject to change without notice.

Some luminaires use fluorescent or high intensity discharge (HID) lamps that contain small amounts of mercury. Such lamps are labeled, "Contain Mercury" and/or the symbol "HG". Lamps that contain mercury must be disposed of in accordance with local requirements. Information regarding lamp recycling and disposal can be found at [www.lamprecycle.org](http://www.lamprecycle.org)

