

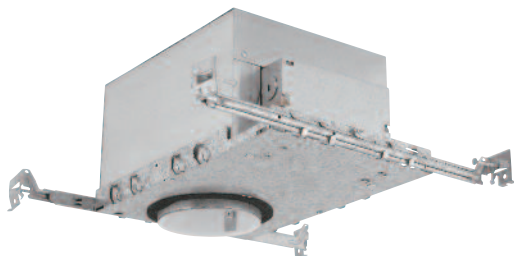
CFRIC4VI8/NEINB

4" Design/Build - AirSeal™ IC/Non-IC Rated Downlight
New Construction

Catalog Number: _____

Type: _____

Project: _____



Description

IC/Non-IC rated downlight for long-life, energy efficient compact fluorescent lamps. Provides broad, uniform light distribution with excellent color rendering. Ideal for areas that require long hours of continuous operation.

Features

- AirSeal™ housing.
- IC rated for insulated ceiling applications; non-IC for non insulated ceilings.
- Specular reflectors for excellent light output.
- Grooved baffle reduces glare at aperture.
- Die-stamped plaster frame.
- c/ETL listed for damp locations and through branch circuit wiring.
- Provided with BH2 bar hangers.



CATALOG SYSTEM AND OPTIONS

SAMPLE CATALOG NUMBER: CFRIC4VI8NEINB-P4BW

| HOUSING | BALLAST | SOCKET | TRIMS (choose one) | |
|--------------|--|------------|--------------------|------|
| CFRIC4VI8 | NEI | NB | | |
| CFRIC4VI8 | NEI | NB | P4BW | P4WB |
| CFM118/GX24Q | 120V Electronic normal power factor ballast ¹ | No bracket | P4B | P4S |
| (electronic) | | | P4RC | P4F |
| | | | P4RG | R436 |
| | | | P4RB | |
| | | | P4RW | |
| | | | P4VWW | |
| | | | | |

White Baffle, white flange
Black Baffle, white flange
Clear reflector; white flange
Gold reflector; white flange
Black reflector; white flange
White reflector; white flange
Wall wash, white baffle, white scoop
Wall wash, black baffle, white scoop
Drop shower light, white flange, wet location listed
Fresnel lens, white flange, wet location listed
Shower trim, wet location listed

¹ Energy Star and Title 24 compliant.
General Notes:
Lamp compatibility is noted under housings.
Electronic ballast is available with G24Q lamp only.

SPECIFICATIONS

1. **Ballast** - NEI electronic normal power factor ballast operates four pin GX24q compact fluorescent lamps over 45khz. Ballast meets EPA Energy Star registered luminaire requirements. Ballast meets FCC Part 18 on consumer limits on EMI/RFI. Minimum starting temperature of 0 degrees fahrenheit. Ballast features auto shutdown at end of lamp life.

NEI electronic normal power factor ballast is designed to operate compact fluorescent lamps to ANSI Standard IEC C-78-901-2005.

2. **Bar Hanger** - Pre-Installed BH-2 bar hangers telescope from 10" to 24". Bar hanger is equipped with heavy-duty fluted nails. Interlocking support tabs provide smooth adjustment on bar hangers. Integral grid clips for NEMA G ceilings.

3. **Plaster Frame** - Precision die-stamped plaster frame of galvanized steel. Mounting frame accommodates ceiling materials from 1/2" to 1" thick.

4. **Housing** - Deep drawn 22 gauge steel single piece housing painted white. Adjusts vertically in frame to accommodate ceiling thickness up to 1-3/8" thick. Ceiling opening 4-1/4". Accommodates lamp up to 50 watts depending on trim used. Plaster Frame is stamped 22 gauge galvanized steel.

5. **Trims** - Spun and stamped steel is powder coated in a variety of colors. Features three spring steel friction fit clips for secure hold within housing. Available in a wide variety of styles; clear lens included.

6. **Socket** - One vertically mounted plastic, 4-pin compact fluorescent socket allows lamp to seat snugly and position it for optimal photometric performance.

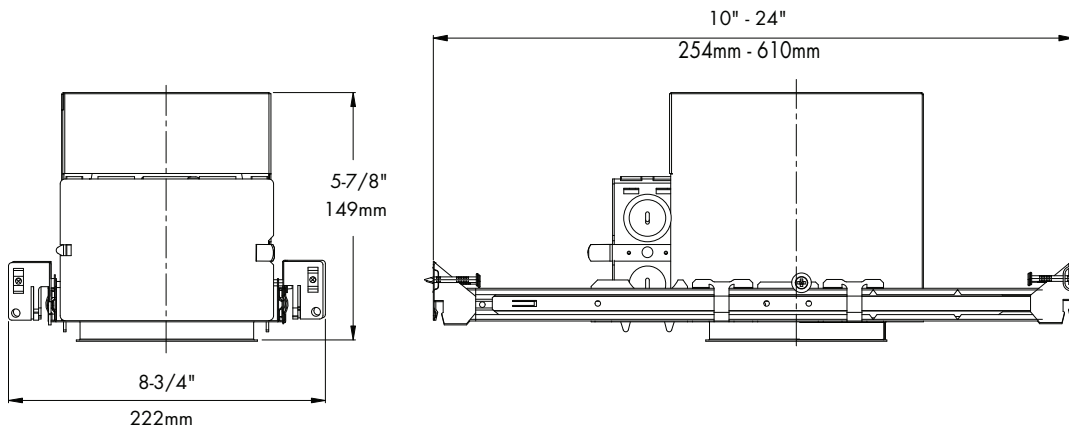
7. **Junction Box** - Extra large 27 cubic inch .063" galvanized steel with snap on cover and ground wire riveted to frame. Approved for through branch circuit wiring with up to 3 #12 gauge AWG conductors. Knockouts for 1/2" and 3/4" conduit and 4 romex pry-outs with strain relief. Meets all safety requirements of c/ETL and NEC.

8. **c/ETL Listing** - c/ETL Listed for damp locations.

9. **AirSeal™** - Luminaire is AirSeal™ rated meeting ASTM E283 limiting passage of air through housing to no more than 2.0 CFM at 75 Pascals. AirSeal™ housing meets restricted airflow requirements of Washington State Energy Code (W.S.E.C.) and International Energy Conservation Code (I.E.C.C.). Luminaire supplied with pre-installed gasket to ensure AirSeal™ installation.

DIMENSIONS

CFRIC4VI8/NEINB



REV. 02/10



PHILIPS CAPRI
776 South Green St., Tupelo, MS 38804
Phone 662.842.7212 FAX 662.841.5501
www.caprilighting.com

PHILIPS DAYBRITE CANADA:
189 Bullock Drive, Markham, Ontario, Canada L3P 1W4
Phone 905.294.9570 FAX 800.268.0003
www.day-britecanada.com

CP2-1

4" COMPACT FLUORESCENT TRIMS



P4BW (Shown)
White Baffle w/white flange

P4B
Black baffle w/white flange
5" O.D. (127 mm)

| Lamp | IC | Non-IC |
|--|-----|--------|
| CFRIC4V13NE1NB CFL Triple Tube | 13W | 13W |
| CFRIC4V18NE1NB CFL Triple Tube | 18W | 18W |



P4RC (Shown)
Clear reflector w/white flange

P4RG
Gold reflector w/white flange
5" O.D. (127 mm)

| Lamp | IC | Non-IC |
|--|-----|--------|
| CFRIC4V13NE1NB CFL Triple Tube | 13W | 13W |
| CFRIC4V18NE1NB CFL Triple Tube | 18W | 18W |



P4RB (Shown)
Black reflector w/white flange

P4RW
White reflector w/white flange
5" O.D. (127 mm)

| Lamp | IC | Non-IC |
|--|-----|--------|
| CFRIC4V13NE1NB CFL Triple Tube | 13W | 13W |
| CFRIC4V18NE1NB CFL Triple Tube | 18W | 18W |



P4WW (Shown)
Wall wash, white baffle w/white scoop

P4WB
Wall wash, black baffle w/white scoop
5" O.D. (127 mm)

| Lamp | IC | Non-IC |
|--|-----|--------|
| CFRIC4V13NE1NB CFL Triple Tube | 13W | 13W |
| CFRIC4V18NE1NB CFL Triple Tube | 18W | 18W |



P4S
Drop Shower Light w/white flange
Wet Location Listed

5" O.D. (127 mm)

| Lamp | IC | Non-IC |
|--|-----|--------|
| CFRIC4V13NE1NB CFL Triple Tube | 13W | 13W |
| CFRIC4V18NE1NB CFL Triple Tube | 18W | 18W |



P4F
Fresnel Lens. Wet Location Listed
5" O.D. (127 mm)

| Lamp | IC | Non-IC |
|--|-----|--------|
| CFRIC4V13NE1NB CFL Triple Tube | 13W | 13W |
| CFRIC4V18NE1NB CFL Triple Tube | 18W | 18W |



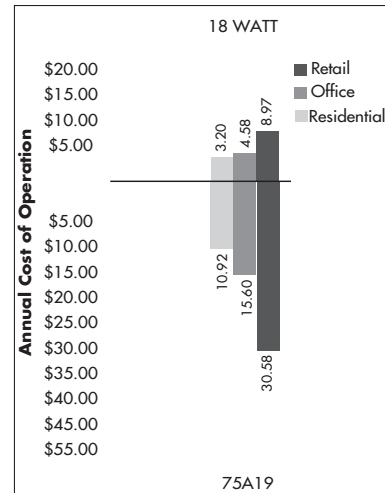
R436
Shower Trim. Wet Location Listed
5" O.D. (127 mm)

| Lamp | IC | Non-IC |
|--|-----|--------|
| CFRIC4V13NE1NB CFL Triple Tube | 13W | 13W |
| CFRIC4V18NE1NB CFL Triple Tube | 18W | 18W |

Operating Characteristics

| Catalog Number | Lamp | Line Amps | Input Watts | Power Factor | Min. Start Temp. |
|----------------|--------------|-----------|-------------|--------------|------------------|
| CFRIC4V18NE1 | CFM18W/GX24Q | 0.34 | 22 | >50% | 0°F |

LUMINAIRE WATTAGE CONSUMPTION COMPARISON



For additional photometrics go to caprilighting.com

Philips Capri reserves the right to make changes without notice.©2010

CP2-1

PHILIPS CAPRI
776 South Green St., Tupelo, MS 38804
Phone 662.842.7212 FAX 662.841.5501
www.caprilighting.com

THOMAS LIGHTING CANADA:
189 Bullock Drive, Markham, Ontario, Canada L3P 1W4
Phone 905.294.9570 FAX 800.268.0003
www.day-britecanada.com

capri
LIGHTING